

Sung to the tune of "Deep in the Heart of Texas"

What's Up at the Dallas Fed





Our website redesign is soon to go online...



The screenshot displays the Federal Reserve Bank of Dallas website with a new design. At the top, there is a navigation bar with links for 'About the Fed', 'Contact Us', 'FAQs', 'CAREERS', 'NEWS', and 'EVENTS'. The main header features the bank's logo and name, along with a search bar. Below the header, a large banner highlights 'President Fisher's Latest Speech' titled 'Containing (or Restraining) Systemic Risk' from New York City on June 6, 2011. The main content area is divided into three columns: 'Recent Additions' listing various reports and surveys, 'Upcoming Events' listing future conferences and summits, and 'Economic Snapshot' featuring a chart titled 'First Quarter Payroll Employment Growth Healthy' comparing Texas and U.S. growth rates from 1997 to 2011. A sidebar on the left provides a 'Locate Information For:' section with links for various user groups like individuals, businesses, and students.

Recent Additions

- 6.8 Dallas Beige Book
- 6.7 Southwest Economy
- 6.1 Texas Service Sector Outlook Survey
- 5.31 Economic Letter
- 5.27 Trimmed Mean PCE Inflation Rate

[MORE NEWS »](#)

Upcoming Events

- 8.19-8.20 Macroeconomic Aspects of the Globalization of Inflation
- 7.27 The International Marketplace
- 7.11-7.12 Global Economic Forum 2011
- 6.16 Hispanic Economic Experience
- 6.14-6.15 Economic Summit 2011—Late-Breaking News: Using Headlines to Bring Classroom Material to Life

[MORE EVENTS »](#)

Fed News

- 6.7 Chairman Bernanke On the Record
- 6.1 Texas Economic Indicators
- 5.25 Term Auction Facility
- 5.18 Community Outlook Survey

Economic Snapshot (Last Update: 09/30/2011)

Job Growth | Labor Market | Construction | Energy | Exports | Index

Chart 1: First Quarter Payroll Employment Growth Healthy

Percent

6
4
2
0
-2
-4
-6
-8

'97 '98 '99 '00 '01 '02 '03 '04 '05 '06 '07 '08 '09 '10 '11

■ Texas ■ U.S.

2.6
1.5

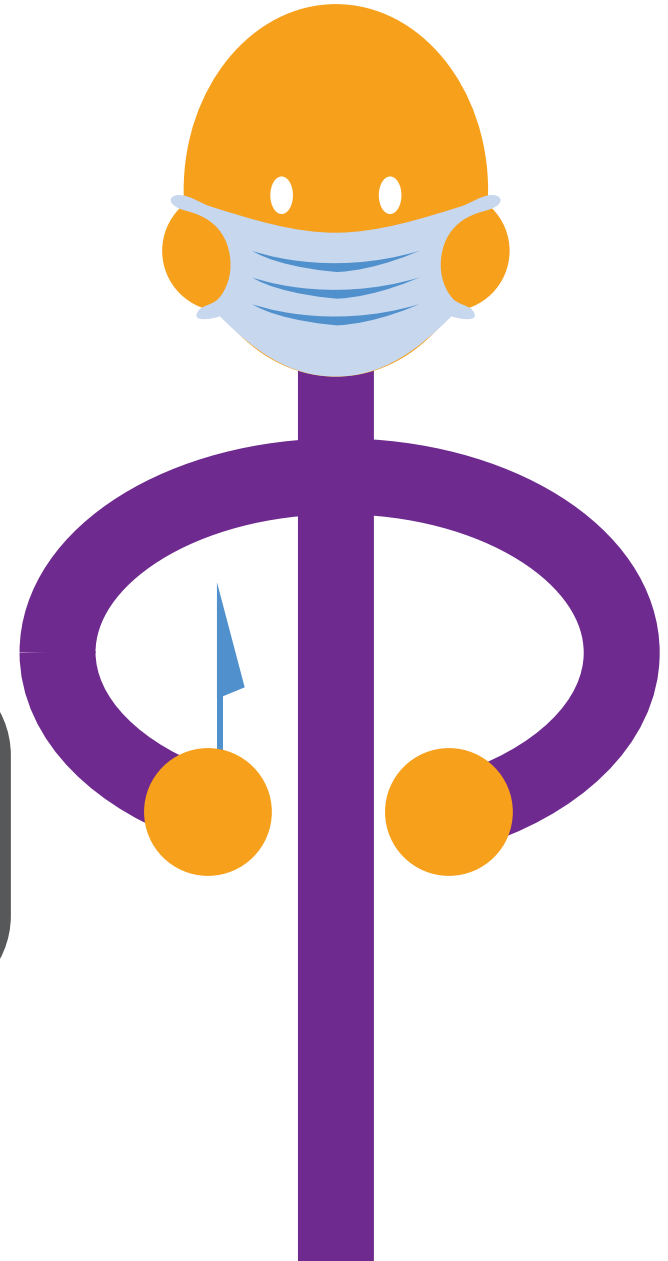
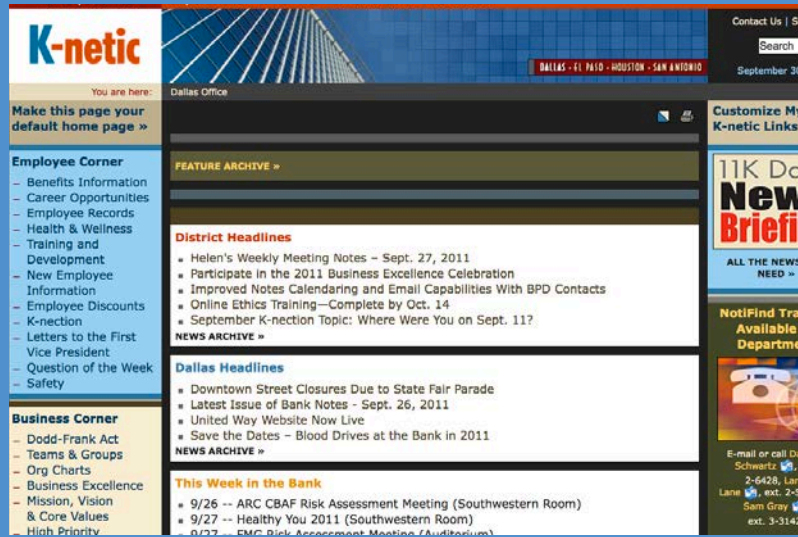
*Quarterly; seasonally adjusted, annualized rate.
SOURCES: Bureau of Labor Statistics; Texas Workforce Commission; seasonal and other adjustments by Federal Reserve Bank of Dallas.

[Learn more about the Eleventh District Regional Economy »](#)

Deep
in the
Heart
of Texas!



Our intranet is due to get a facelift too...



Deep
in the
Heart
of Texas!





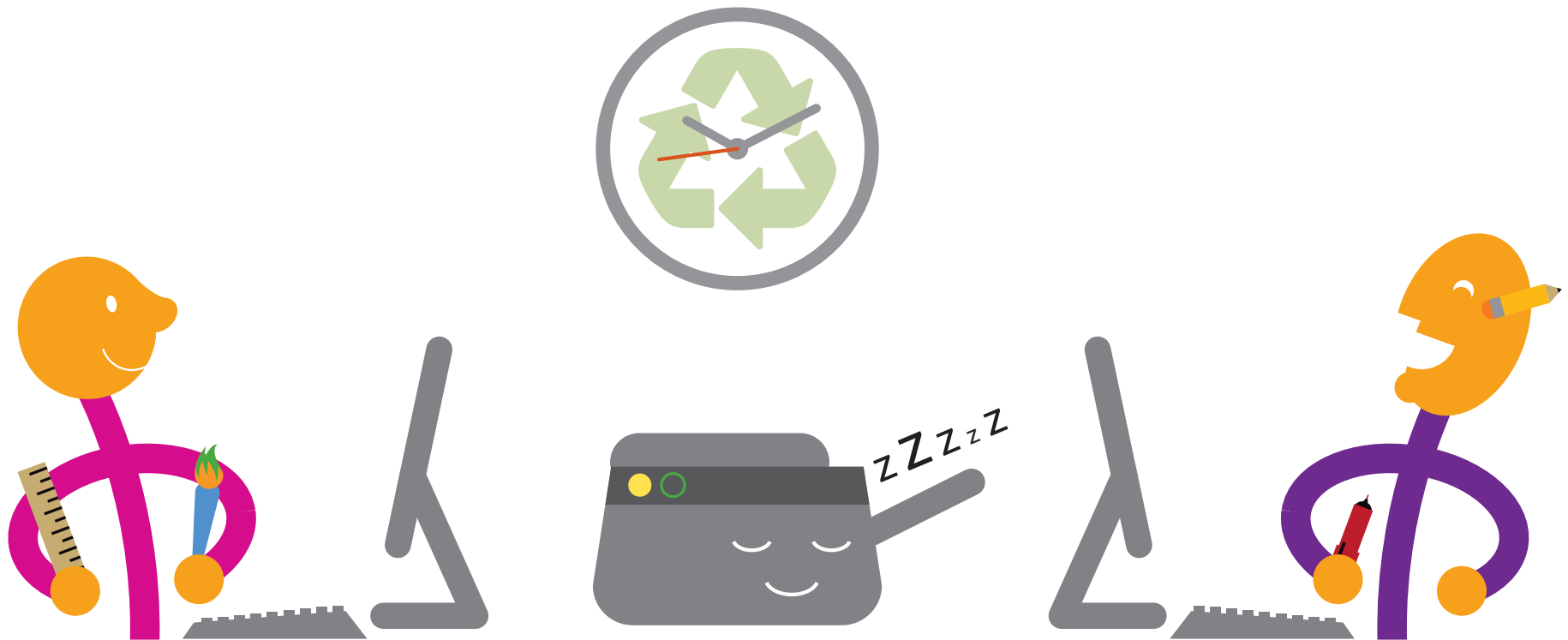
**We now work with InCopy
So edits don't get sloppy...**



Deep
in the
Heart
of Texas!



 **It has cut out endless proofs**
And eliminated goofs... 



Deep
in the
Heart
of Texas!





A new exhibit under way
Has our lobby in disarray...

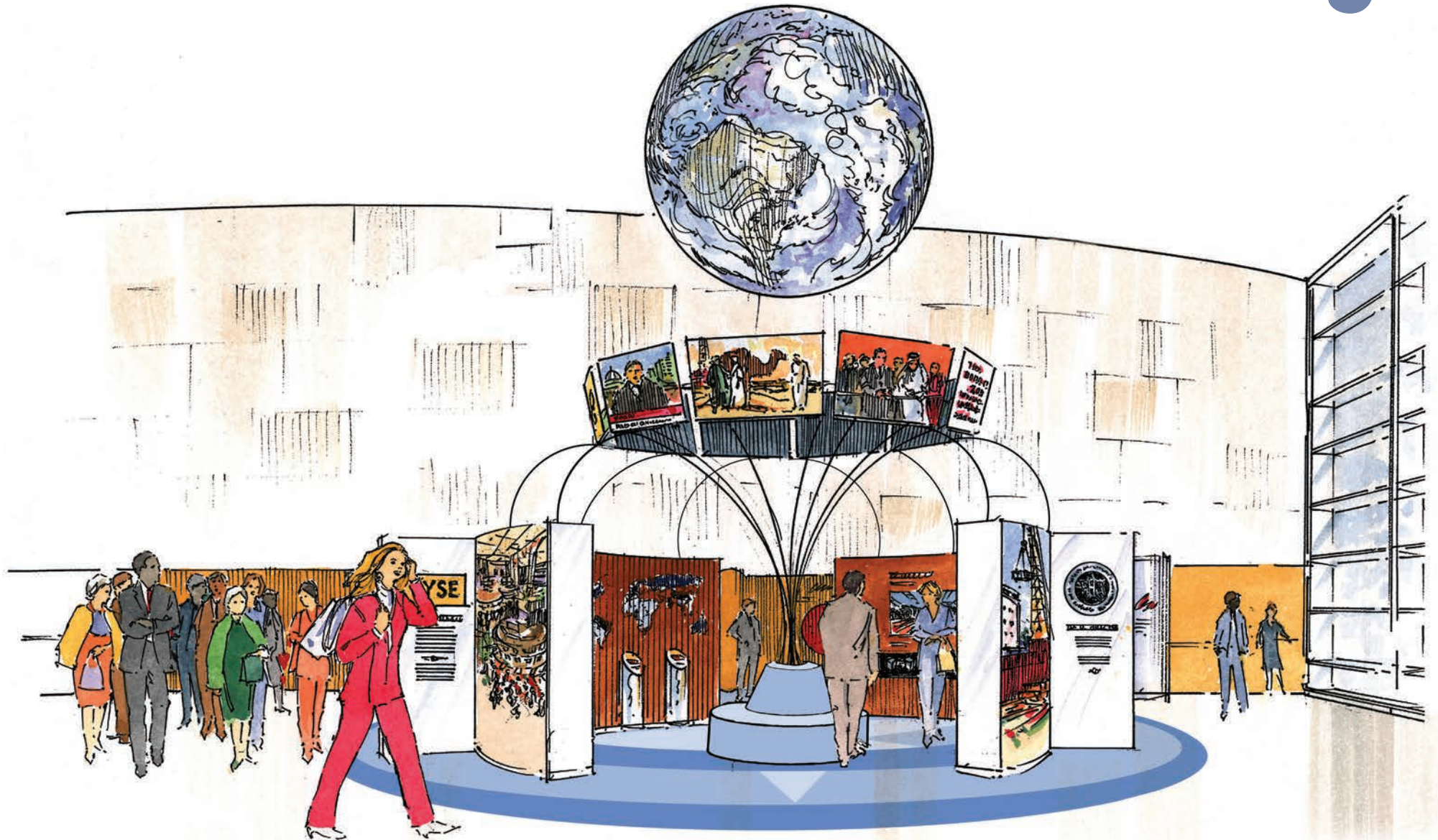


Deep
in the
Heart
of Texas!



But when it's done a year from now,

♪ **Bank guests will all say, "Wow!"...** ♪



Deep
in the
Heart
of Texas!



🎵 **Check out Dallas Fed careers;** 🎵
Spread the word among your peers...



Deep
in the
Heart
of Texas!





**There's an opening for VP;
You would get to work with me...**



Deep
in the
Heart
of Texas!

