



BANK FOR INTERNATIONAL SETTLEMENTS

Restricted

# Overview of the BIS

Emma Claggett







## What is the BIS?

- World's oldest international financial organization (established in 1930)
  - *“Settlements”?*
- Based in Basel, Switzerland
  - *Basel?*





## What is the BIS?

- Bank for central banks and international organizations
- Forum for cooperation among central banks and the financial community
- Representative offices in Hong Kong and Mexico City





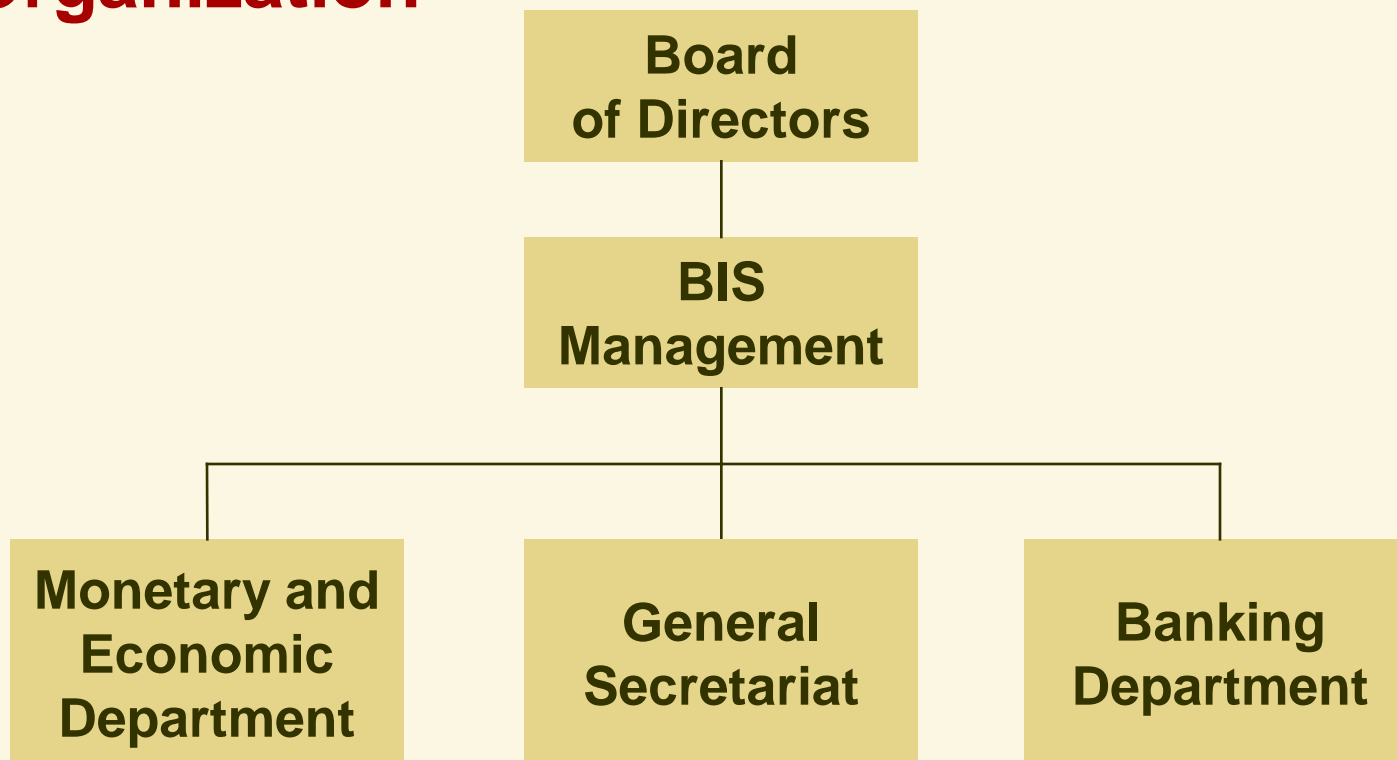
## Mission

- Promotes monetary and financial stability
- Acts as a forum for discussion and cooperation among **central banks** and the financial community
- Acts as a bank for **central banks** and international organizations





# Organization







## Monetary and Economic Department

- “Forum for discussion”
- Organizes meetings
  - Bimonthly (and other) meetings of central bank officials
  - Current developments and outlook for world economy and financial markets
- Collects and disseminates statistics
- Research and policy analysis
  - Annual Report
  - Quarterly Review
  - Working Papers





# Monetary and Economic Department

- “Cooperation”: the Basel Process
- Facilitative role
- Hosting committees that focus on financial stability and disseminating their work





1. Basel Committee on Banking Supervision
2. Committee on the Global Financial System
3. Committee on Payment and Settlement Systems
4. Markets Committee
5. Central Bank Governance Group
6. Irving Fisher Committee on Central Bank Statistics
7. Financial Stability Board
8. International Association of Deposit Insurers
9. International Association of Insurance Supervisors





# Banking

**BIS**

*Central banks invest  
part of their reserves  
at the BIS ...*



*... and the BIS reinvests the  
funds in high-quality securities  
and bank deposits.*

The BIS also earns interest  
by investing its own capital



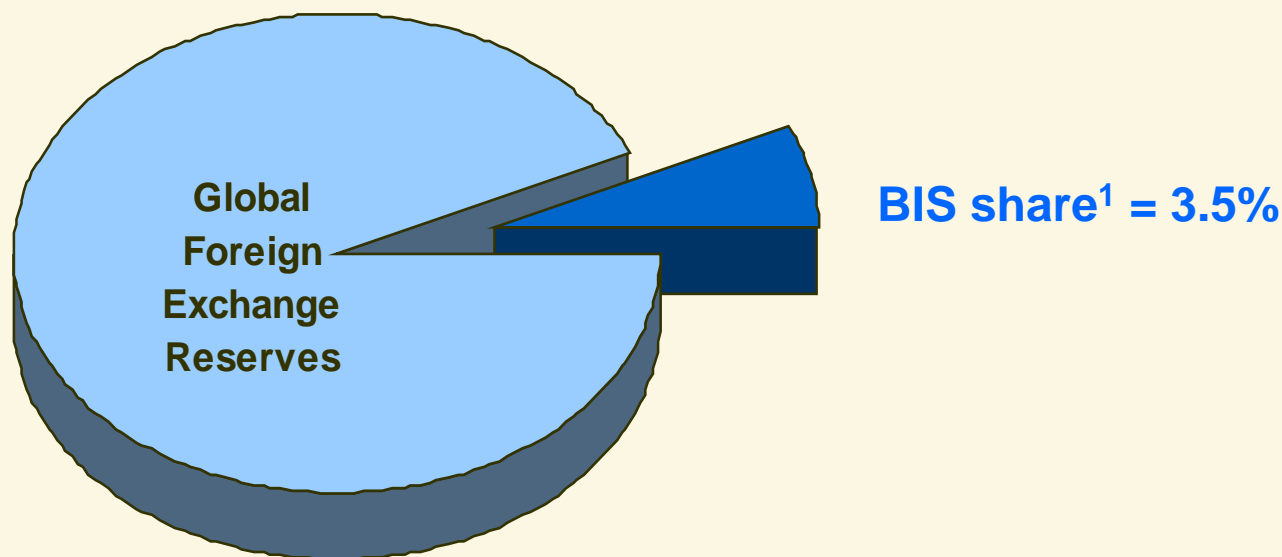
**Banking profits**





## Customer base

Some 120 central banks, plus a number of international institutions, currently make active use of BIS banking services.

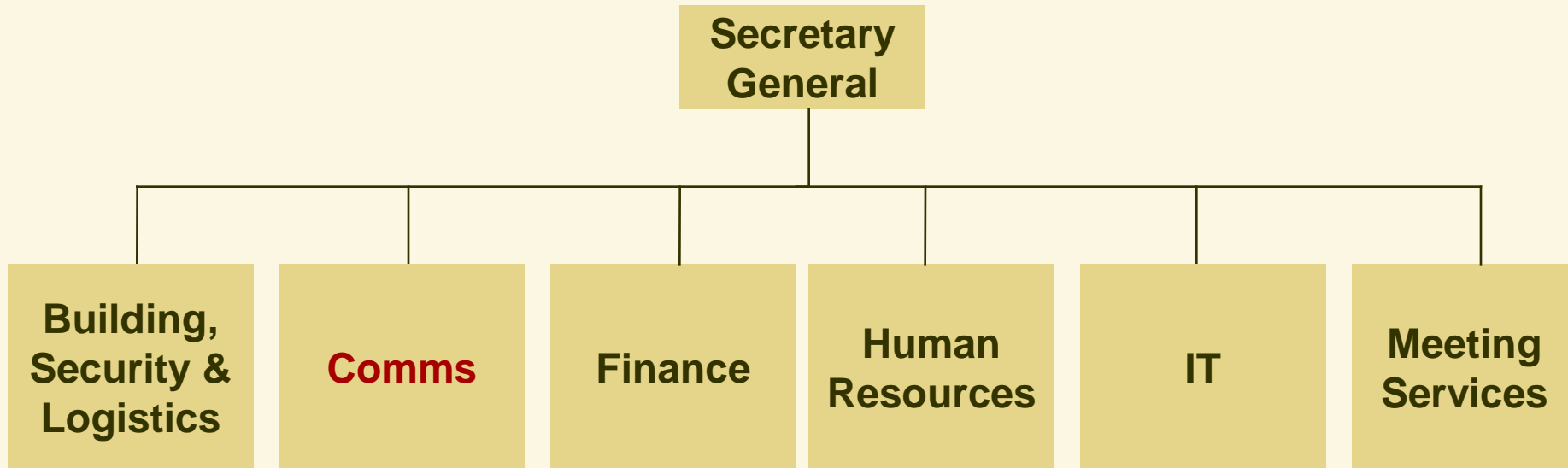


<sup>1</sup> As at 30 September 2009. Excluding funds from non-reserve holding institutions (mainly international institutions) and central bank customers where foreign exchange reserves data are not available, as well as euro-denominated placements by euro area countries.





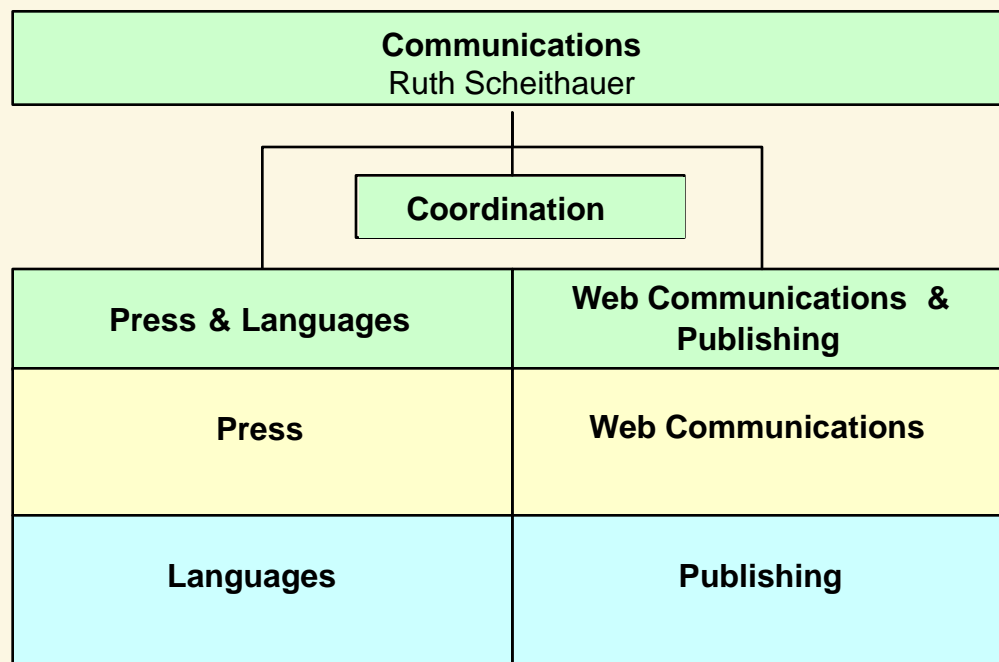
# General Secretariat







# Communications











- BIS: [www.bis.org](http://www.bis.org)
- Basel Committee: [www.bis.org/bcbs](http://www.bis.org/bcbs)
- FSB: [www.financialstabilityboard.org](http://www.financialstabilityboard.org)
- Twitter: BIS\_org
- Emma.Claggett@bis.org