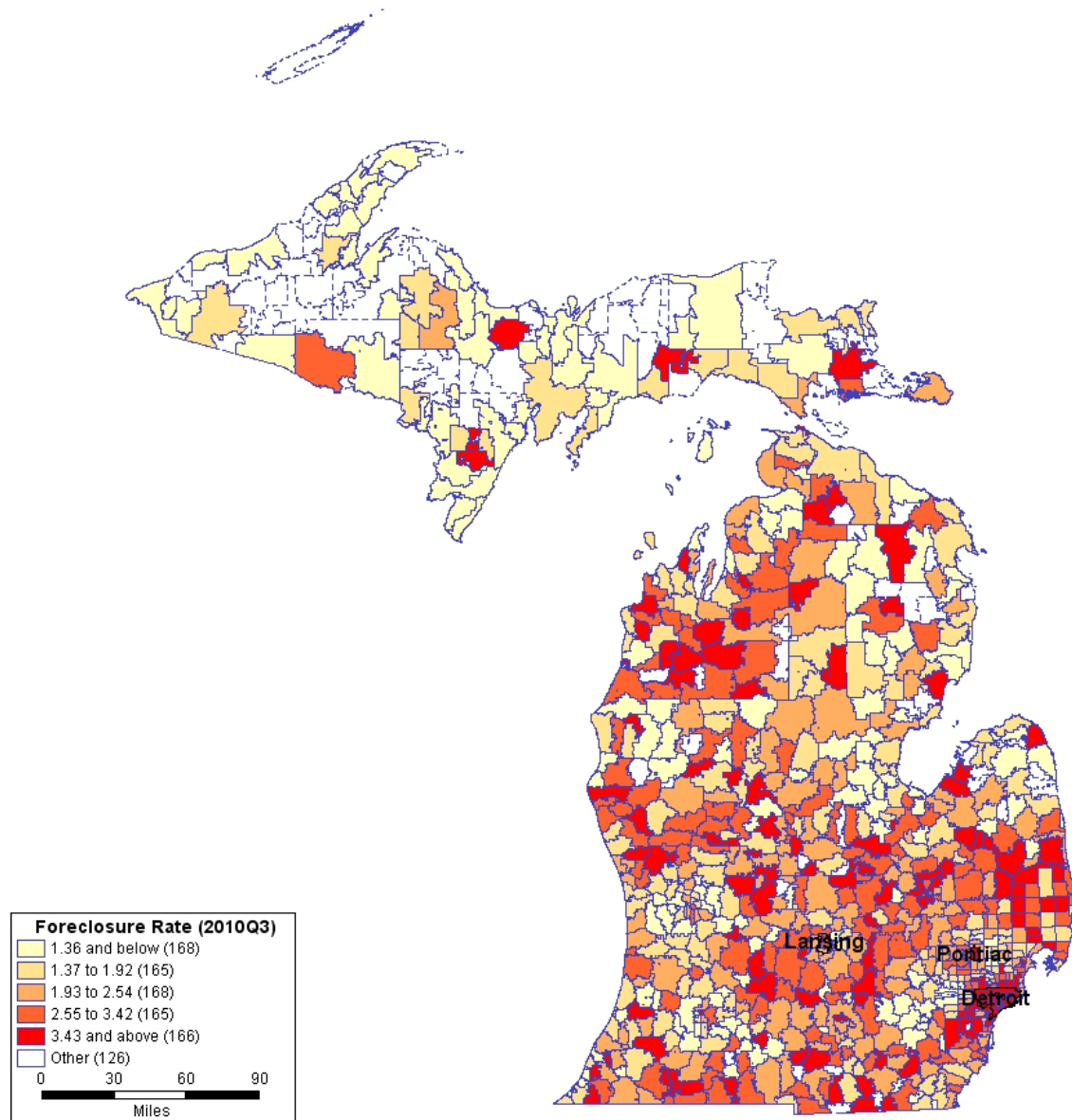


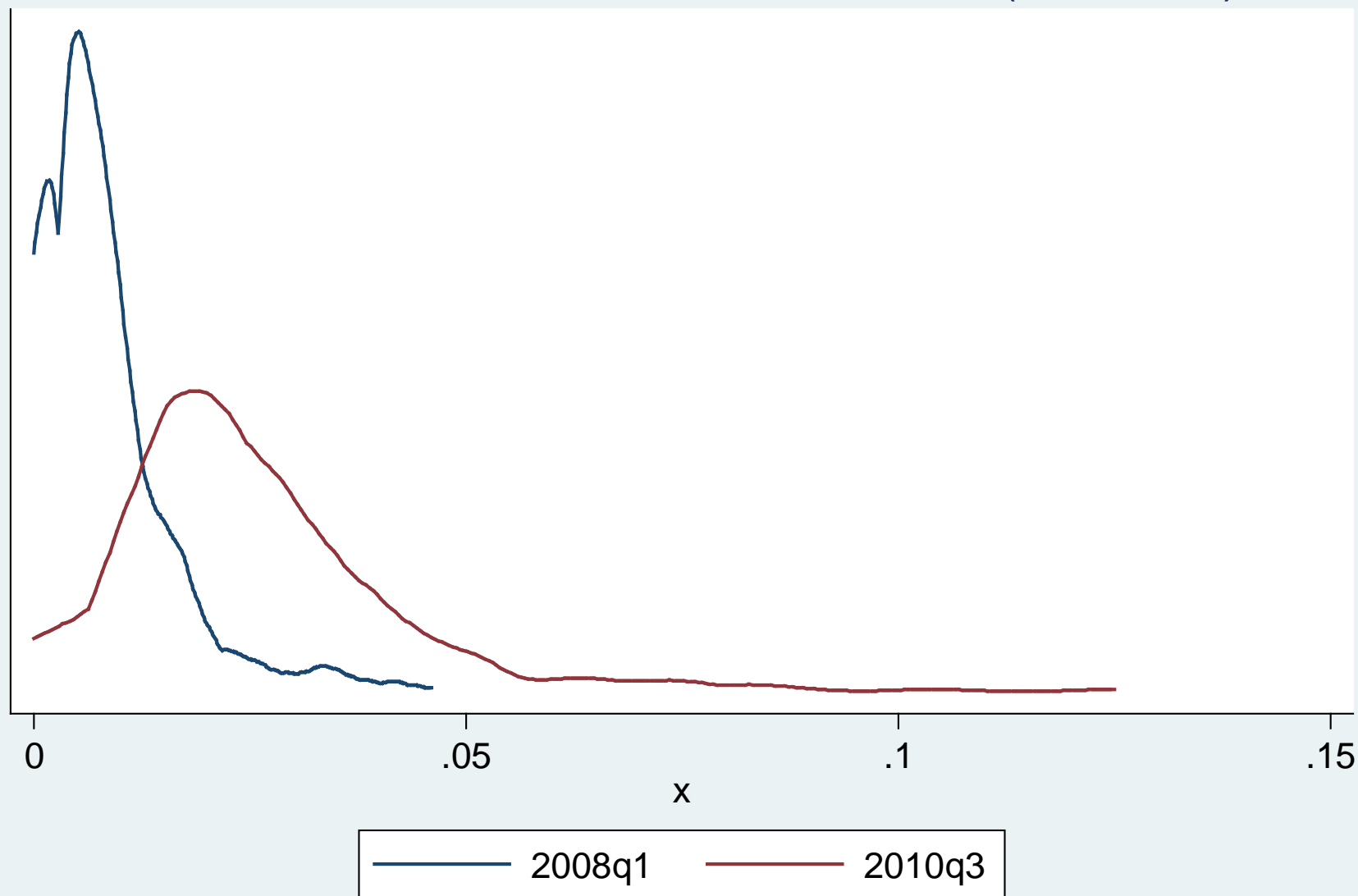
# Michigan: Foreclosure Rate 2010 3Q



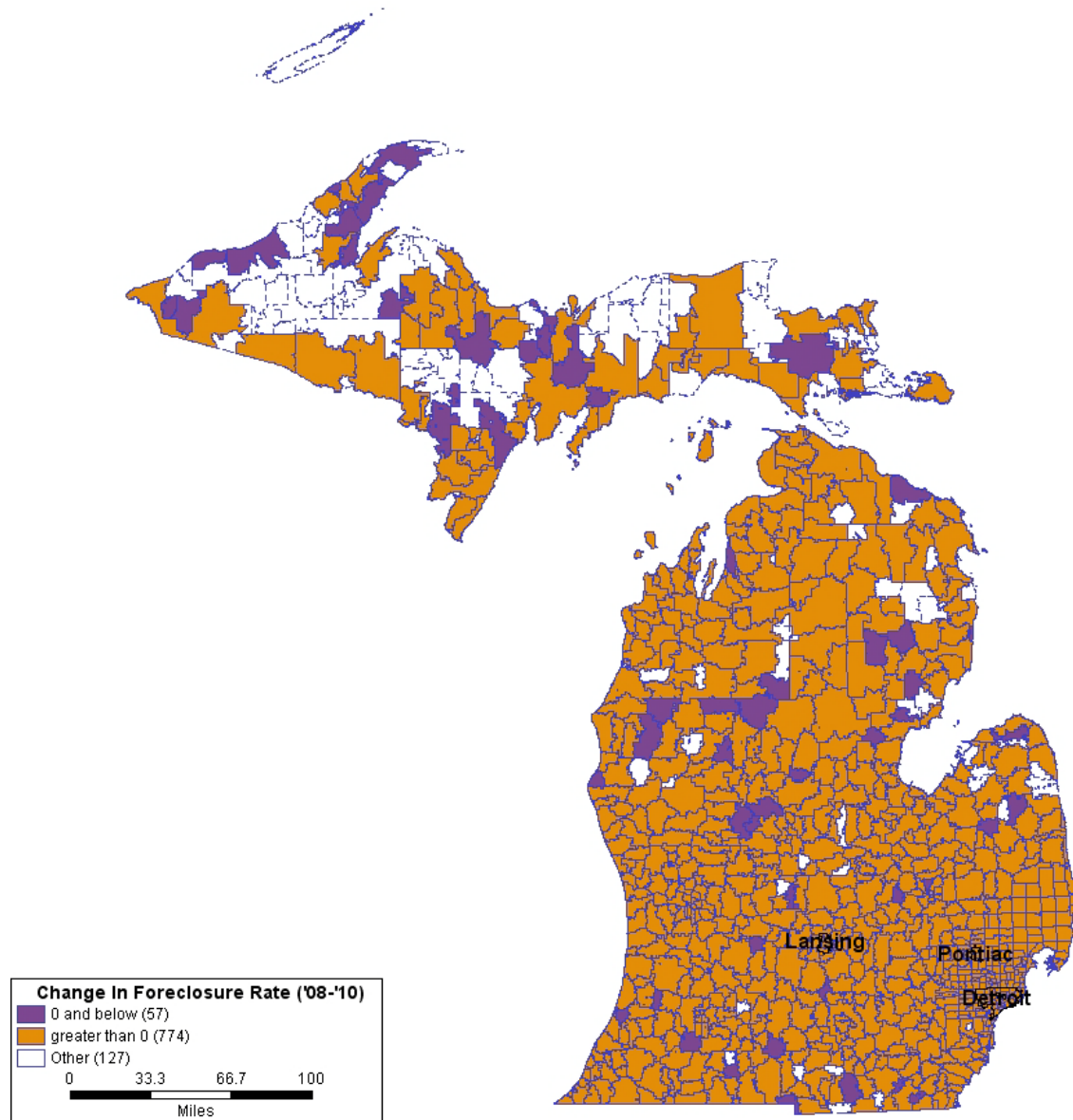
Note: ZIP code has minimum 50 mortgages in 2010

Source: Lender Processing Services (LPS) Applied Analytics

## Distribution of Foreclosure Rates in MI (All Loans)



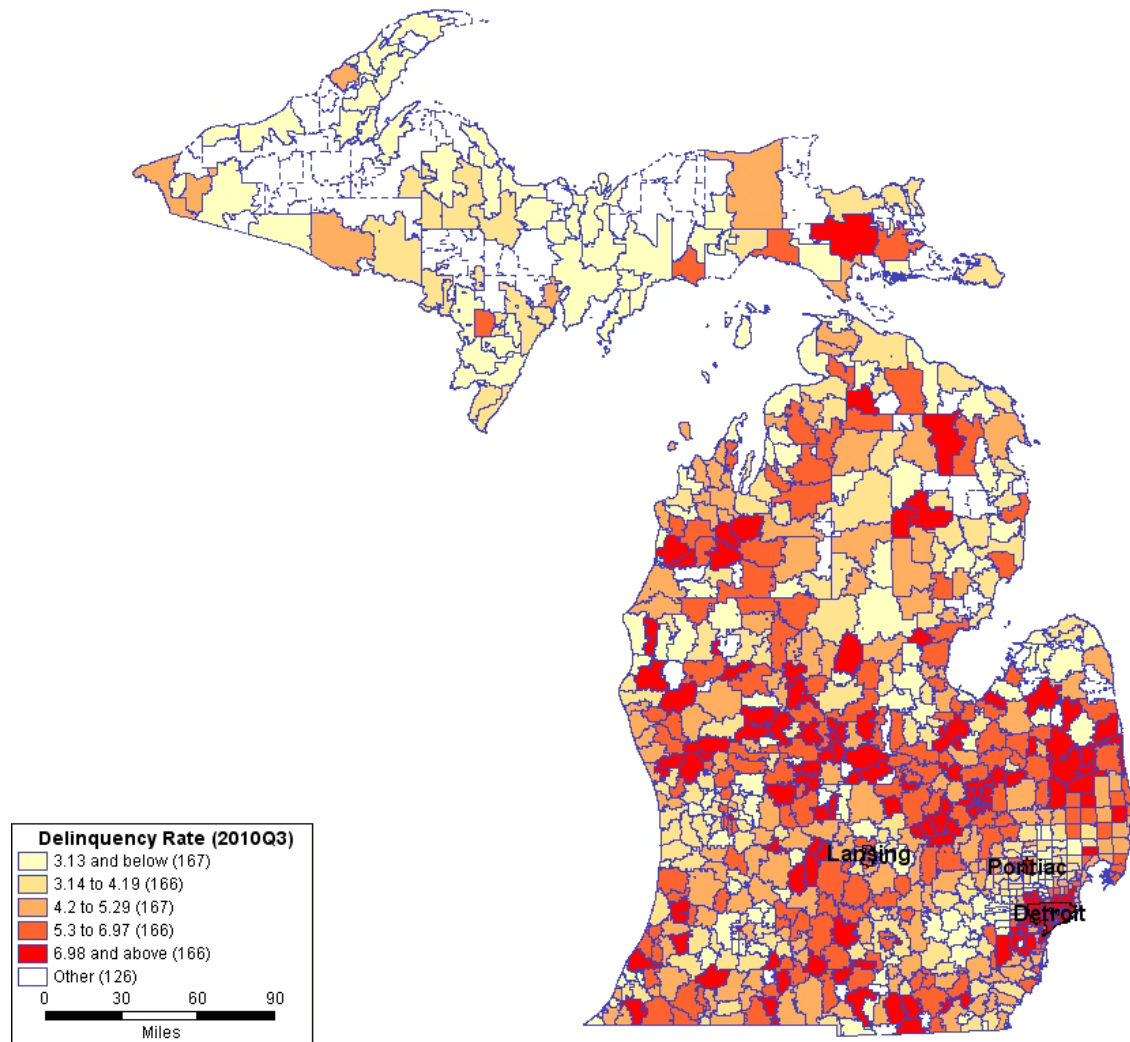
# Michigan: Percentage Point Change in Foreclosure Rate 2008 - 2010



Note: ZIP code has minimum 50 mortgages in 2008 & 2010

Source: Lender Processing Services (LPS) Applied Analytics

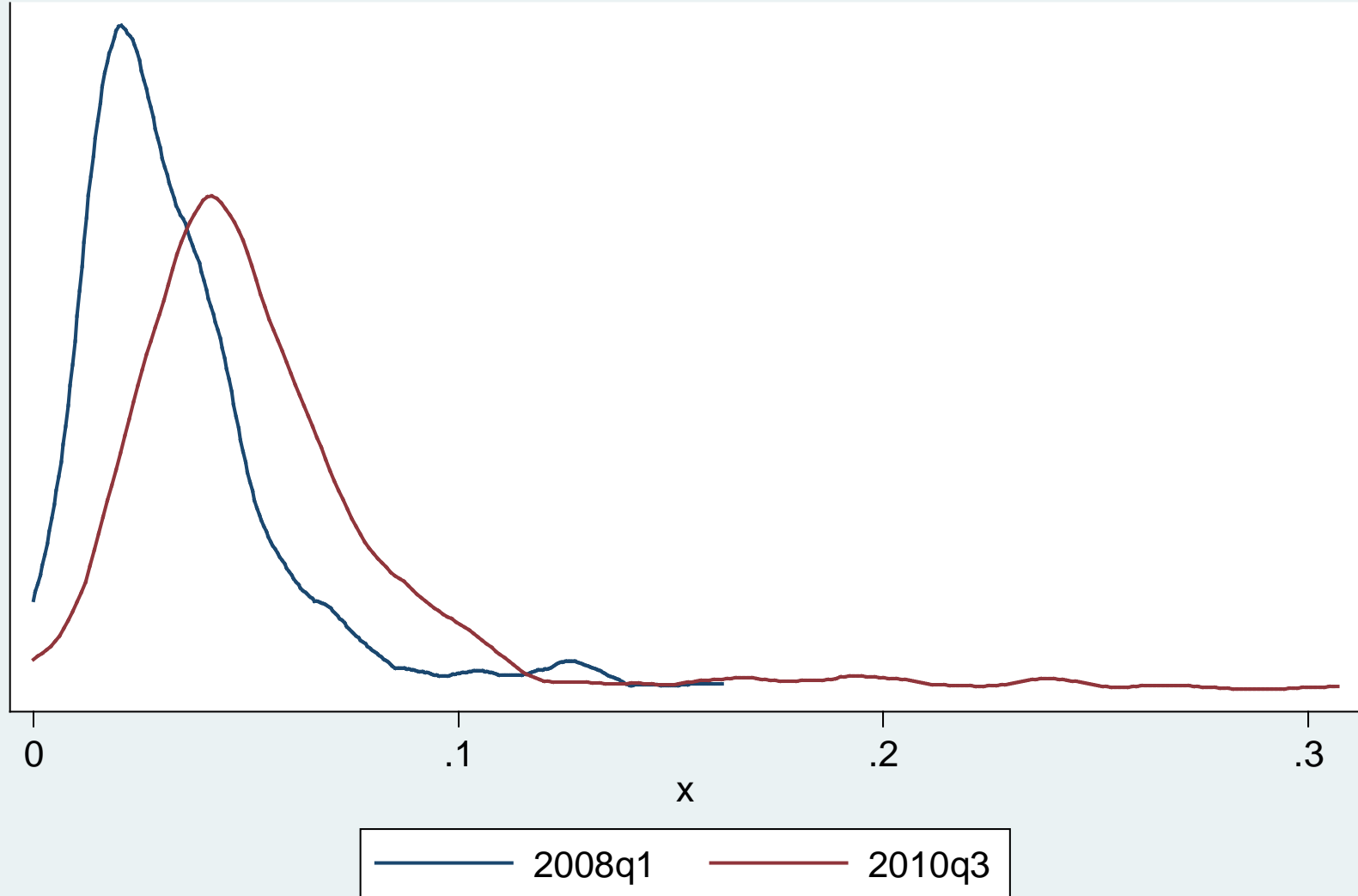
# Michigan: Delinquency Rate 2010 3Q



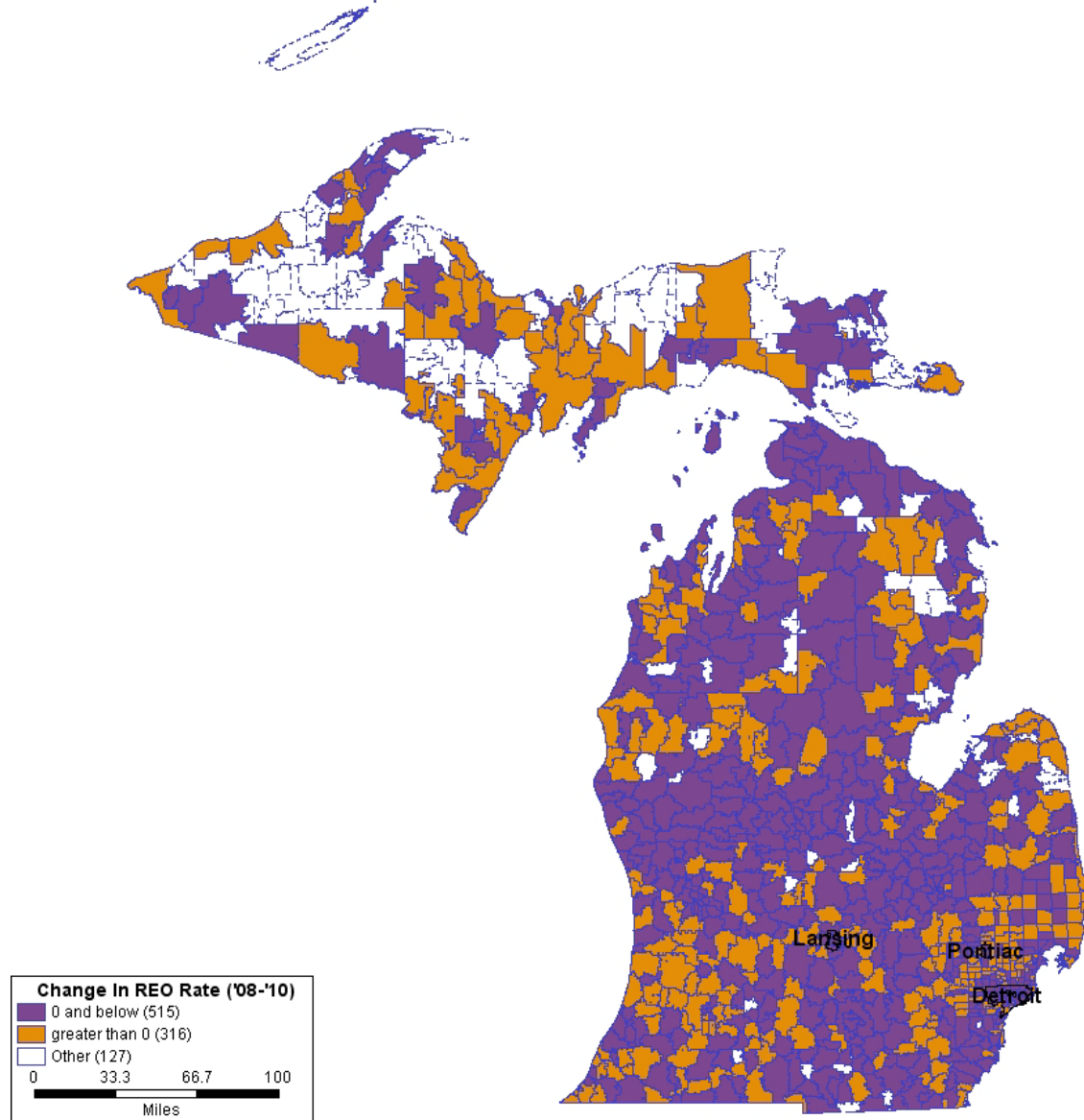
Note: ZIP code has minimum 50 mortgages in 2010

Source: Lender Processing Services (LPS) Applied Analytics

## Distribution of Delinquency Rates in MI (All Loans)



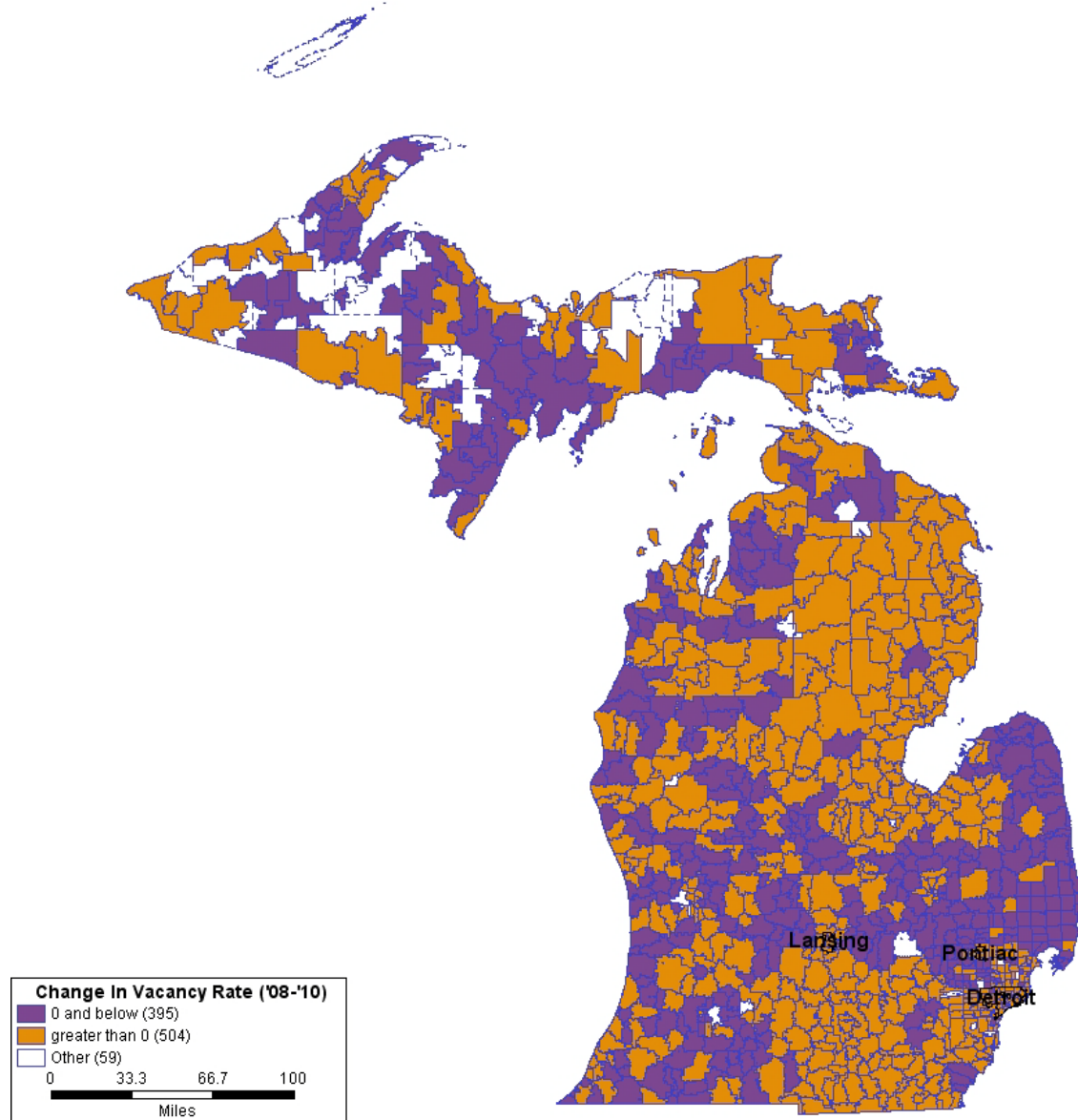
# Michigan: Percentage Point Change in REO Rate 2008 - 2010



Note: ZIP code has minimum 50 mortgages in 2008 & 2010

Source: Lender Processing Services (LPS) Applied Analytics

# Michigan: Percentage Point Change in Vacancy Rate 2008 - 2010



Note: ZIP code has minimum 75 housing units in 2008 & 2010

Source: United States Postal Service