



Federal Reserve Bank of Chicago

**The Effect of Disability Insurance
Receipt on Labor Supply**

Eric French and Jae Song

REVISED
July 1, 2011

WP 2009-05

THE EFFECT OF DISABILITY INSURANCE RECEIPT ON LABOR SUPPLY

Eric French and Jae Song*

July 1, 2011

Abstract

This paper estimates the effect of Disability Insurance receipt on labor supply. We find that benefit receipt reduces labor force participation by 26 percentage points three years after a disability determination decision, although the reduction is smaller for those over age 55, college graduates, and those with mental illness. Estimates are not sensitive to accounting for the fact that those allowed benefits are different than those who are denied. However, estimates are sensitive to accounting for the fact that many individuals who are initially denied are later allowed. The participation elasticity with respect to the after-tax wage is 1.5.

*Comments welcome at jae.song@ssa.gov and efrench@frbchi.org. Affiliations are Social Security Administration and Federal Reserve Bank of Chicago, respectively. French thanks the Social Security Administration for hospitality while much of this paper was written. We thank David Autor, John Bound, Meredith Crowley, Mariacristina DeNardi, John Jones, Wojciech Kopczuk, Fabian Lange, Bruce Meyer, David Pattison, Bernie Wixon and seminar participants at the Federal Reserve Bank of Chicago, Federal Reserve Bank of New York, Northwestern University, University of Chicago, University of Notre Dame, University of Illinois-Chicago, National Tax Association Meetings, Michigan Retirement Research Conference, and American Economics Association Meetings, for helpful comments, An Qi, Deanna Becker, Shani Shani Schechter, and especially David Benson, Angshuman Gooptu, and Zach Seeskin for excellent research assistance. The views in this paper are not necessarily those of the Federal Reserve System or Social Security Administration.

1 Introduction

This paper presents new evidence on the effect of Disability Insurance (DI) receipt on labor supply. We compare the earnings patterns of individuals who applied for and received disability insurance benefits to the earnings patterns of those who applied for benefits but were denied.

Relative to Bound's (1989) classic study on earnings of rejected DI applicants, we make the following key improvement. We address the fact that those who are denied benefits are potentially different than those who are allowed. Using Social Security administrative data, we exploit the assignment of DI cases to Administrative Law Judges (ALJs), an assignment which is essentially random. We document large differences in allowance rates across judges, and show that these differences are unrelated to the health or earnings potential of DI applicants. Using instrumental variables procedures, we use judge specific allowance rates to predict allowance of individual cases. We then use predicted allowance to estimate the effect of allowance on labor supply.

We find that three years after assignment to an ALJ, DI benefit allowance reduces earnings \$4,059 per year and labor force participation 26 percentage points. As it turns out, our estimates are not very sensitive to accounting for the fact that those who are denied benefits are potentially different than those who are allowed: instrumental variables estimates are very close to OLS estimates. These estimates imply a high labor supply elasticity with respect to the after-tax wage. The earnings and participation elasticities are 1.8 and 1.5, respectively.

However, many initially-denied DI applicants appeal the denial or re-apply. In fact, we find that 50% of applicants who are denied benefits by an ALJ are eventually allowed benefits within five years. During the appeal process, these applicants tend not to work, even though they are currently not receiving benefits. This has an important effect on our estimated effects. When we measure earnings and DI benefit allowance five years after assignment to an ALJ, rather than three, we find that DI allowance reduces earnings \$4,915 per year, rather than \$4,059.

Furthermore, we estimate labor supply responses for different subgroups of the population. We identify many subgroups of the population whose labor supply is not sensitive to benefit receipt, such as those over age 55, college graduates, and those with mental illness. Because we have the population of DI applicants, we obtain precise estimates of the labor supply

responses, even for these narrow subgroups of the population.

Using a Marginal Treatment Effects approach, we find that marginal applicants handled by stricter judges (who allow benefits to relatively few applicants) have similar labor supply responses to those handled by lenient judges. This is consistent with the view that the marginal applicant handled by a strict judge is as physically unable to work as the marginal case handled by a more lenient judge.

Section 2 gives a literature review, section 3 describes the DI system, section 4 describes our estimation methods, section 5 shows data, section 6 reports estimates, and section 7 concludes.

2 Literature Review

Disability Insurance is one of America's largest social insurance programs. In 2005, 4.1% of men ages 25-64 were receiving disability insurance benefits. The total cost of the program was \$85.4 billion, making it more costly than unemployment insurance. Furthermore, after two years on the disability rolls, individuals become eligible for Medicare benefits. The total cost of Medicare payments to DI beneficiaries was \$49 billion in 2005 (Autor and Duggan 2006).

DI has often been cited as one of the main causes of the fall in labor supply of American men aged 55-64. In order to better understand the labor supply effects of DI, Bound (1989) compared earnings patterns of individuals who applied for and received DI benefits to those who applied for benefits but were denied. He found that those who were allowed benefits were less likely to work than those who were rejected, but the effect was modest. Even those who were denied benefits had participation rates of less than 50% after denial of benefits. Thus, Bound inferred that at most 50% of rejected male applicants during the 1970s would have worked were it not for the availability of disability benefits. These estimates imply that DI is responsible for well under half of the fall in labor supply of American men aged 55-64. Von Wachter et al. (2011) find that the patterns documented by Bound have changed little over time.

Parsons (1991) and Bound (1989, 1991) discuss three key criticisms of Bound's approach. First, those who are denied benefits are different than those who are allowed benefits. Bound's claim was that this should lead to an overstatement of the effect of disability on labor supply,

because those who are denied are on average healthier than those who are allowed. However, Lahiri et al. (2008) found that those who are denied benefits tend to have very intermittent work histories. Those who are allowed benefits are more likely to work and have higher earnings before applying for benefits. Thus it is not clear whether those who are denied are more or less likely to work in the absence of benefits.

It is this problem that our study addresses. Our identification approach compares those who are denied benefits to those who are otherwise similar but are allowed benefits. Our approach compliments the approach of Chen and Van der Klaauw (2008) who exploit the vocational grid. They use the fact that in many cases, an individual aged 54 applying for benefits would be denied, although the same individual at age 55 would be allowed. Our estimated labor supply effects are similar to Chen and Van der Klaauw (2008). However, we add to their analysis by providing larger sample sizes. This allows for more precise estimates. It also allows us to document how the responsiveness of labor supply varies with demographics, because we can obtain precise estimates for narrow subgroups. Our estimated effects are also similar to Maestas et al. (2011), who use assignment of disability examiners at the initial stage of the DI application process as a source of variation in allowance rates. The advantage of our study relative to theirs is that judges are assigned to cases on a rotational basis, which makes the assignment process random for all practical purposes, whereas examiners at the initial stage may specialize. Thus our source of variation is more clearly exogenous. Furthermore, our data includes earnings and the share of individuals who are allowed or are appealing up to 10 years after the ALJ allowance decision, whereas they have data only on earnings and the share working, and only up to three years after an initial allowance decision. This is important because we find that 40% of those not allowed benefits three years after an assignment to an ALJ are allowed benefits within 10 years of assignment.

Our paper, Van der Klaauw (2008) and Maestas et al. (2011) all obtain identification at different stages of the adjudication process, and thus our estimated effects correspond to different pools of applicants. Thus the three studies are of independent interest. For example, the disparities in allowance rates across judges has received a great deal of attention in policy circles (Social Security Advisory Board, 2006), legal studies (Taylor, 2007), and the popular press (Paletta, 2011). Despite the differences between our paper, Chen and Van der Klaauw (2008), and Maestas et al. (2011), all three papers produce similar results and reinforce each

other's findings.

The second criticism of Bound's approach is that many individuals who are denied continue to appeal the denial. In order to be deemed eligible for benefits, the individual cannot work while appealing the initial denial. Thus, many of those who are denied do not work in order to increase the chances of successful appeal. If the option to appeal had not existed, more of these individuals might have returned to the labor force. We partly address this problem by estimating the labor supply response to whether the individual was allowed benefits three years after assignment to a judge, although we show that many re-apply and appeal well after three years. We provide new evidence on the share of denied individuals who appeal and subsequently receive benefits.¹

Third, in order to apply for benefits, the individual must be out of the labor force for a period of time. For example, the individual can only work a very limited amount in the five months before applying for benefits. During that period, human capital may depreciate. Thus the individual may not be able to return to her previous job, even if she is healthy. In other words, the very act of applying for benefits reduces ability to work. Our study does not address this issue.

3 The Disability Insurance System

This section shows that that the DI application process is high stakes: DI benefits are worth about \$200,000 to a typical beneficiary if they maintain low earnings. Those allowed benefits face strong work disincentives. Those denied benefits face strong incentives to re-apply and appeal. Judges who make allowance decisions are for all practical purposes randomly assigned to cases. Judicial independence means that judges have a great deal of latitude to determine eligibility (Taylor, 2007), and as a result judges can have very different allowance rates.

3.1 Labor Supply Incentives

Both income effects (through the high replacement rate) and substitution effects (beneficiaries will lose benefits if they earn above the SGA amount) indicate that DI should reduce

¹Understanding subsequent allowance and appeal is also an important input into dynamic models of DI application and receipt, such as Bound et al. (2010), Benitez-Silva et al. (2011), Low and Pistaferri (2011).

labor supply. If an applicant is allowed DI benefits, the dollar amount of benefits depends on previous labor earnings. Disabled worker benefits averaged \$1,004 per month among DI beneficiaries in 2007 (Social Security Administration, 2008). Because the benefit schedule is progressive, disability benefits replace 60% and 40% of labor income for those at the 10th and 50th percentile of the earnings distribution, respectively (Autor and Duggan 2006). Those receiving benefits can earn up to the Substantial Gainful Activity level (SGA), which was \$500 per month (in current dollars) during the 1990s and \$900 per month in 2007. Those earning more than this amount for more than a nine month Trial Work Period lose their benefits.

Furthermore, DI benefits likely reduce labor supply through a third channel – Medicare eligibility. Individuals receiving DI benefits are eligible for Medicare after a two year waiting period. Medicare largely eliminates the value of employer-provided health insurance. For those working at a firms providing health insurance, Medicare eliminates an important work incentive (French and Jones, 2011).

Disabled individuals with especially weak earnings histories and low asset levels are eligible for a related program called Supplemental Security Income (SSI). SSI benefits are not a function of previous labor income. The Federal Maximum SSI benefit level was \$386 per month in 1990 and \$623 in 2007. Some states supplement this benefit. Benefits are reduced by 50 cents for every dollar of labor income. Individuals drawing SSI may also be immediately eligible for Medicaid, the government provided health insurance program for the poor. Many people draw both DI and SSI benefits concurrently.

Relatively few people lose disability benefits for reasons other than death.² For example, of 7.1 million individuals (DI worker beneficiaries) drawing DI benefits in 2007, 0.5% had benefits terminated because they earned above the SGA level for an extended period of time in 2007. Another 0.3% had benefits terminated because they were deemed medically able to work after a continuing disability review, which is a periodic review of the health of DI beneficiaries (Social Security Administration, 2007).

The disability allowance decision is high stakes. If the individual is allowed benefits, that individual is typically given disability benefits until the normal retirement age (age 65 during the 1990s and now 66), when these benefits are converted into Social Security benefits. Thus

²DI benefits are converted into retiree benefits once the beneficiary turns the normal retirement age. The statistics above are for DI benefits before the conversion to retiree benefits.

a 52 $\frac{1}{2}$ year old receiving \$12,000 in annual disability benefits will likely receive these benefits for 12 $\frac{1}{2}$ years, meaning that she will receive \$150,000 in transfers. Furthermore, two years after receiving benefits, she will receive Medicare benefits, which are worth at least \$50,000. Thus, being allowed benefits is worth on average \$200,000 over a lifetime.

3.2 Determining Eligibility for DI benefits

An individual is deemed eligible for benefits if they have met certain work requirements and if they are deemed medically disabled. Although the exact algorithm is complex (see Hu et al. 2001, Benitez-Silva et al. 1999, for details), one of two conditions must be met for the individual to be deemed disabled.

The first condition is “listed impairment”. Individuals that meet one of over 100 specific listed impairments are given immediate benefits. Examples include statutory blindness (i.e., corrected vision of 20/200 or worse in the better eye) and multiple sclerosis.

The second condition is inability to perform either past work or other work. This condition involves a combination of medical impairment and vocational factors such as education, work experience, and age. These cases can be especially difficult to evaluate. Myers (1993), a former Social Security Administration Deputy Commissioner, points out that “if a worker has a disability so severe that he or she can do only sedentary work, then disability is presumed in the case where the person is aged 55 and older, has less than a high school education, and has worked only in unskilled jobs, but this is not so presumed in the case of a similar young worker. Clearly, borderline cases arise frequently and are difficult to adjudicate in an equitable manner!”

The disability determination process is a multi-step process. Figure 1 shows the share of applicants who are allowed at different steps during our sample period (described in detail in Section 4 and Appendix A). After an initial waiting period of five months, DI applicants have their case reviewed by a Disability Determination Service review board. Figure 1 shows that 39% of applicants are allowed and 61% are denied at this stage. At this stage the most clear-cut cases are allowed, such as those with a listed impairment. Cases that are more difficult to judge (such as mental and musculoskeletal problems) are usually denied at this stage. About half of all applicants denied for medical reasons appeal at the disability determination service reconsideration stage. About 10% of those that appeal are allowed benefits at this stage

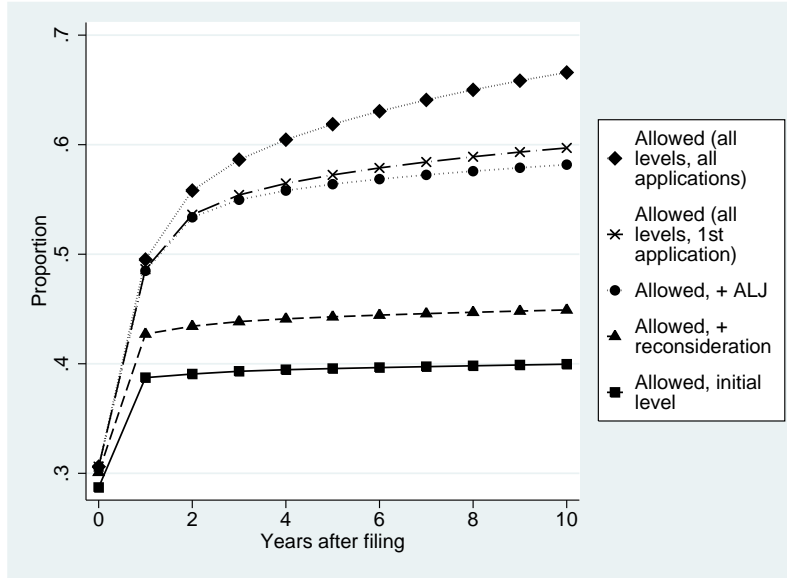


Figure 1: ALLOWANCE AT DIFFERENT STAGES OF THE APPLICATIONS AND APPEALS PROCESS.

(Social Security Administration, 2008). Sixty days after the disability determination service decision, a DI appeal can be requested. DI appeals are reviewed in court by Administrative Law Judges (ALJs) after a delay of about one year.³ 14% of all initial claims, or 59% of all claims that are appealed, are allowed at the ALJ level.⁴ If the case is denied at the ALJ level, the applicant can then appeal to the Appeals Council level. If the applicant is denied at this level, she can then appeal after 60 days at the Federal Court level. However, Figure 1 shows that appeals at the higher levels are rarely successful: less than 2% of all initial claimants receive benefits at the Appeals Council or Federal Court level. Lastly, denied applicants can end their appeal and re-apply for benefits. The last line on Figure 1 includes those who re-apply for benefits. Another 7% of all initial claims are eventually allowed benefits through a re-application. 33% do not get benefits at any stage after 10 years. Figure A1 in the appendix shows that most who do not get benefits after a few years end their appeals. However, 10 years after initially claiming, 6% are still in the process of appealing or re-applying.

Because we identify the causal effect of DI on labor supply using variation at the ALJ level, the estimated effect applies only to marginal cases. The least healthy individuals, such

³Judges can make one of three decisions: allowed, denied, or remand. A “remand” is a request for more information from the disability determination service. Our measure of “allowed” is the final determination at the ALJ stage, and thus includes the final decision on remands.

⁴The full allowance rate at this stage is slightly higher than 59%. Our 59% allowance rate is for our estimation sample, which drops pre-reviewed cases that have higher allowance rates. See footnote 7.

as those with listed impairments, are allowed at the Disability Determination Service stage. The healthiest individuals will be denied by every judge and will be denied on every appeal. Thus our results may not be fully generalizable to all DI applicants. However, these marginal cases are of great interest, because these are the individuals most likely to be affected by changes in the leniency of the appeals level of the DI system.

3.3 Assignment of DI cases to judges

Administrative Law Judges (ALJs) are assigned to appeals cases on a rotational basis, with the oldest cases receiving priority at each hearing office.⁵ Thus, the oldest case is given to the judge who most recently finished a case. Therefore, conditional on applying at a given office at a given point in time, the initial assignment of cases to judges is “essentially random” (Social Security Advisory Board, 2006). Judges do not get to pick the cases they handle. Judges are not assigned cases based on the expertise of the judge. Furthermore, an individual cannot choose an alternate judge after being assigned a judge.

The initially assigned judge is the same as the deciding judge in 96% of all cases. Although the deciding judge is not necessarily randomly assigned, the initially assigned judge is.⁶ We use the initial assignment to a judge as our source of exogenous variation.

⁵Title 5, Part III, Subpart B, Chapter 31, Subchapter I, Section 3105 of the US Code states that “Administrative law judges shall be assigned to cases in rotation so far as practicable” (United States, 2007). The Social Security Administration’s Hearings, Appeals and Litigation Law Manual (HALLEX) Volume I Chapter 2 Section 1-55 states that “the Hearing Office Chief Administrative Law Judge generally assigns cases to ALJs from the master docket on a rotational basis, with the earliest (i.e., oldest) Request for Hearing receiving priority.” (Social Security Administration, 2009). HALLEX gives 11 exceptions to this rule. For example, the exceptions include “critical cases”, such as individuals with terminal conditions and military service personnel, as well as remand cases. These cases are expedited and reviewed by Senior Attorneys. If there is a clear cut decision to be made, then the Senior Attorney will make the decision without a hearing. If the case is not clear cut, then the case is put back in the master docket and is assigned to a judge in rotation. Fortunately we can identify cases that were decided without a hearing and we delete them from our sample. Our analysis focuses on the remaining cases where there was a hearing.

⁶The initially assigned judge is not necessarily the judge who handles the case. This fact can potentially be exploited by DI claimants. For example, if an individual misses her court case, she may be reassigned to a different judge. Another possibility is that for some cases in remote areas, cases are held via video conference where the judge and claimant are not in the same room. Claimants can demand that the judge be present at a hearing, and thus the judge must travel to the claimant. Some judges refuse to travel, and thus another judge will be reassigned to the case. In this way, an individual can potentially reject a judge.

4 Methods

In order to estimate the effect of DI allowance on earnings and labor force participation, we use a two-step procedure. In the first step we generate an instrumental variable that is a measure of judge leniency. Conditional on the hearing office and time, this variable is correlated with the probability of allowance, but is uncorrelated with health, ability, or preferences for work. In the second step we use instrumental variables procedures to estimate the effect of DI on earnings and participation.

4.1 Model

We model allowance using the latent index framework

$$A_i = 1\{g(Z_i) - V_i > 0\} \quad (1)$$

where A_i is a 0-1 indicator =1 if individual i is allowed benefits, $1\{\cdot\}$ is the indicator function, $Z_i = (j_i, X_i)$, j_i is a full set of judge indicator variables equal to 1 if the judge heard individual i 's case, and X_i is a full set of hearing office-day indicators (equal 1 if individual i 's case is assigned to that hearing office-day pair). The residual V_i can be thought of as the lack of severity of disability observed by the judge (but not by the econometrician). Equation (1) implies that all judges observe the same signal of disability V_i but differ in the level of severity necessary to be allowed benefits $g(Z_i)$, which is a measure of leniency. Allowance rates differ across judges only because judges differ in leniency. Equation (1) implies that a case allowed by a strict judge will always be allowed by a lenient one. This is the monotonicity assumption of Imbens and Angrist (1994). We assume that $P(Z_i) \equiv \Pr(A_i = 1|Z_i)$ is a non-trivial function of Z_i (i.e., the instrument causes variation in allowance rates), sometimes known as the rank or existence condition. Lastly, we assume V_i is independent of j_i and X_i , sometimes called the independence assumption.

If judges are randomly assigned to cases, conditional on date and hearing office, assignment satisfies the independence assumption. If judges differ only in leniency, then the monotonicity assumption is satisfied. If different judges have different allowance rates, then the rank condition holds. Sections 6.1 and 6.2 provide evidence on the extent to which the independence, monotonicity, and rank assumptions hold.

Equation (1) is not identified because a monotonic transformation of both $g(\cdot)$ and V delivers the same choice probabilities. As a normalization, we assume that V_i is distributed uniformly. Furthermore, as a functional form assumption we assume that $g(\cdot)$ is linear in j_i and X_i so that we can estimate equation (1) using the regression function

$$A_i = j_i\gamma_1 + X_i\delta_1 + e_i. \quad (2)$$

To parameterize the effect of allowance on participation and earnings, we adopt the random coefficients model of Bjorklund and Moffitt (1987):

$$y_i = A_i\phi_i + X_i\delta_y + u_i. \quad (3)$$

where y_i is either earnings or participation. We allow for heterogeneity in the parameter ϕ_i to capture heterogeneity in the effect of benefit receipt on earnings. We allow the variables u_i and ϕ_i to be potentially correlated with A_i , and with each other.⁷

4.2 Estimating Equations

We have 1,497 judges in our sample, each of whom is a potential instrument. IV estimators can suffer from small sample bias when both the number of instruments and the number of observations is large (e.g., Hausman et al. (2009)). In order to address the small sample bias issue while allowing for the flexible error specification in equation (3), our estimation procedure is as follows.

First, for every observation i in our sample, we estimate equation (2), leaving out observation i , as in a jackknife estimator. We define the estimated value of γ_1 from this procedure as $\hat{\gamma}_{1,-i}$. Because we remove observation i , the estimated parameter $\hat{\gamma}_{1,-i}$ is independent of e_i or u_i , even in a small sample. The instrumental variable is $j_i\hat{\gamma}_{1,-i}$.

Second, we estimate the equation

$$A_i = \theta j_i\hat{\gamma}_{1,-i} + X_i\delta_A + \epsilon_i \quad (4)$$

⁷The residual u_i is potentially correlated with A_i because those allowed benefits potentially have low earnings potential. Furthermore, ϕ_i is potentially correlated with A_i because more disabled people are unlikely to work, even when they get the benefit. Finally, u_i and ϕ_i are potentially correlated with each other since unhealthy individuals have lower earnings, whether or not they are allowed benefits.

as well as equation (3) jointly using two stage least squares. Given the above assumptions, Heckman, Urzua, and Vytlacil (2006) and French and Taber (2010) point out that this procedure identifies a weighted average of ϕ_i for the set of individuals affected by the instrument.

We have over 500,000 hearing office-day interactions as in the covariate set X_i , so directly estimating equations (2), (3), and (4) is not computationally feasible. Thus we take deviations from X_i for all variables and estimate (2), (3), and (4) where all variables are deviations from hearing-office day means. The procedure is described in appendix C. The judge effect (i.e., γ_1 vector) is the difference between the probability that a judge allows a case and the average allowance rate at that judge’s hearing office, conditional on the day. Below we refer to this object as the judge allowance differential.

4.3 Marginal Treatment Effects

Section 6.6 presents estimated Marginal Treatment Effects (MTEs), which is the participation or earnings response for the individuals whose allowance decision is affected by changing the instrument. We estimate the equations

$$A_i = f(j_i \hat{\gamma}_{1,-i}) + X_i \delta_{AM} + \eta_i, \tag{5}$$

$$y_i = K(\widehat{P}(Z_i)) + X_i \delta_{yM} + \mu_i \tag{6}$$

where $\widehat{P}(Z_i)$ is the predicted value of A_i from equation (5). As shown by Heckman, Urzua, and Vytlacil (2006) and French and Taber (2010), as well as appendix C, the MTE is

$$K'(p) = E[\phi_i | X_i = x, V_i = p] \tag{7}$$

where p is a particular value of $P(Z_i)$. This value of p can also be interpreted as the (lack of) judge-observed severity of the case V_i . As $P(Z_i)$ increases, the instrument affects individuals with lower levels of severity. We estimate $\hat{\gamma}_{1,-i}$ from equation (2) as before, then estimate equations (5) and (6), allowing the functions $f(\cdot)$ and $K(\cdot)$ to be polynomials. Heckman et al. (2006) experiment with different approaches to estimating the MTE. They find that the polynomial approach works about as well as other procedures. Our Monte Carlo simulations suggest there is very little bias when using polynomials and observed sample characteristics,

such as number of cases and number of judges. Furthermore, the polynomial procedure is computationally feasible when allowing for large numbers of covariates.

4.4 Identifying Levels

The estimation procedure described in section 4.2 identifies the change in earnings or participation caused by DI receipt. To obtain the level, note that the law of total probability gives

$$E[y_i] = E[y_i|A_i = 1] \Pr[A_i = 1] + E[y_i|A_i = 0] \Pr[A_i = 0] \quad (8)$$

Furthermore, equation (3) shows that

$$E[\phi_i] = E[y_i|A_i = 1] - E[y_i|A_i = 0] \quad (9)$$

Using equations (8) and (9) we can solve for the two unknowns:

$$E[y_i|A_i = 1] = E[y_i] + E[\phi_i] \Pr[A_i = 1] \quad (10)$$

$$E[y_i|A_i = 0] = E[y_i] - E[\phi_i] \Pr[A_i = 0]. \quad (11)$$

We can identify $E[y_i]$, $\Pr[A_i = 1]$, $\Pr[A_i = 0]$ directly from the data. Our estimation procedure delivers $E[\phi_i]$ for cases who are affected by our instrument. Assuming that $E[\phi_i]$ for those affected by the instrument is the same as $E[\phi_i]$ for those not affected by the instrument yields estimates of $E[y_i|A_i = 1]$ and $E[y_i|A_i = 0]$ for the full sample. This assumption is untestable, although section 6.6 gives evidence that $E[\phi_i]$ does not vary much over the support of our data.

5 Data

Our initial sample is the universe of individuals who appealed either a DI or SSI benefit denial, and were assigned to an ALJ during the years 1990-1999. Using Social Security Numbers, we match together data from the SSA 831 file, the Office of Hearings and Appeals Case Control System (OHACCS), the Hearing Office Tracking System (HOTS), the Appeals Council Automated Processing System (ACAPS), the Litigation Overview Tracking

System (LOTS), the Master Earnings file (MEF), and the Numerical Identification file (NUMIDENT). These data are described in greater detail in the appendix. To the best of our knowledge, neither the OHACCS, HOTS, ACAPS, nor the LOTS datasets have been used for research purposes before. We match in earnings, reapplications and appeals data from 11 years prior to 10 years following assignment to a judge. Thus our earnings and appeals data run from 1979 to 2009.

We drop all observations heard by a judge who heard less than 50 cases during the sample period. We also drop cases with missing education information. Table A1 in Appendix A presents more details on sample selection criteria and table A2 presents mean age, race, earnings histories, and health of individuals in our estimation sample. Our main estimation sample has 1,779,825 DI cases, heard by 1,497 judges, with a mean allowance rate at the ALJ stage of 64.5%. Because many of those denied by an ALJ appeal or re-apply for benefits, the allowance rate three years after assignment is 76.9%. All dollar amounts listed below are in 2006 dollars, deflated by the CPI.

6 Results

6.1 Establishing the validity of the randomization

In previous sections we claimed that the assignment of cases to judges is random, conditional on hearing office and day. Random assignment implies that we cannot predict the judge using observable characteristics of the judge’s caseload. Table 1 presents tests of this hypothesis.

First we consider which variables predict allowance. Column 1 of Table 1 presents estimates from a regression of an allowance indicator (de-meanded by hearing office and day) on the age, race, earnings histories, and health conditions of individuals in our estimation sample. Women, older individuals, whites, those with strong attachment to the labor market, high earners, those represented by a lawyer, and those who did not complete high school are more likely to be allowed benefits. Column 2 presents *t* – statistics. It shows that these differences are highly statistically significant. The R^2 shows that the covariates explain 3.9% of the variation in allowance rates.

Our instrumental variable is the judge allowance differential, $j_i \hat{\gamma}_{1,-i}$, de-meanded by hear-

TABLE 1: PREDICTORS OF ALLOWANCE AND JUDGE ALLOWANCE DIFFERENTIAL

Covariate	Dependent variable: Allowed		Dependent variable: judge allowance differential	
	Coefficient (1)	t-statistic (2)	Coefficient (3)	t-statistic (4)
	<i>Sex</i>			
Female	0.0290	22.9	0.0002	0.9
	<i>Age</i>			
45 to 54	0.0484	37.3	-0.0003	-1.3
55 to 59	0.1379	54.5	-0.0005	-1.0
60 or older	0.1476	49.7	-0.0004	-0.6
	<i>Race</i>			
Black	-0.0497	-23.1	0.0001	0.1
Other (non-black, non-white) or unknown	-0.0215	-7.0	-0.0001	0.0
	<i>Labor force participation and income</i>			
Average participation rate, years -11 to -2	0.0082	24.9	0.0000	0.1
Average earnings/1,000,000, years -11 to -2 (\$2006)	0.9480	10.2	-0.0002	0.0
	<i>Represented by lawyer</i>			
Represented by lawyer	0.0743	41.8	0.0008	1.0
	<i>Application type</i>			
SSDI	-0.0027	-1.7	-0.0004	-0.6
	<i>Education</i>			
High school graduate, no college	-0.0092	-8.8	0.0000	0.0
Some college	-0.0292	-17.3	-0.0010	-1.4
College graduate	-0.0127	-5.6	-0.0004	-0.5
	<i>Health conditions (by diagnosis group)</i>			
Mental disorders	-0.0124	-4.4	-0.0016	-3.1
Mental retardation	-0.0153	-7.7	-0.0016	-2.6
Nervous system	-0.0063	-1.9	-0.0008	-0.8
Circulatory system (e.g., heart disease)	0.0158	8.6	0.0001	0.2
Musculoskeletal disorders (e.g., back pain)	0.0040	2.3	-0.0006	-1.2
Respiratory system	0.0036	2.4	0.0000	0.0
Injuries	-0.0218	-10.3	-0.0006	-1.0
Endocrine system (e.g., diabetes)	0.0098	5.3	0.0009	1.9
All other	0.0215	10.3	-0.0003	-0.5
Standard deviation of dependent variable	0.4293		0.0659	
R ²	0.0389		0.0002	

Number of applicants = 1,779,825, number of judges = 1,497

Notes: variables allowed and judge allowance differential are demeaned. Standard errors are clustered by judge. Omitted category is male, younger than 45, white, not represented by a lawyer, applying for SSI or SSI and DI concurrently, not a high school graduate, with a neoplasm (e.g., cancer)

TABLE 2: ALLOWANCE RATES, BY DEMOGRAPHICS

		Observations	Allowance rate	Allowance rate	Allowance 3 years later	Std. Error	T-ratio
		(1)	ALJ stage	3 years later	Coeff on judge allowance rate	(5)	(6)
<i>All groups</i>							
All groups		1,779,825	0.645	0.769	0.764	0.008	101
<i>Sex</i>							
Male		894,927	0.638	0.763	0.738	0.010	74
Female		884,898	0.652	0.774	0.791	0.009	84
<i>Age</i>							
44 or younger		647,528	0.580	0.698	0.898	0.015	60
45 to 54		754,191	0.644	0.783	0.752	0.010	74
55 to 59		245,948	0.755	0.866	0.550	0.016	34
60 or older		132,158	0.762	0.848	0.612	0.023	26
<i>Race</i>							
White		416,177	0.673	0.791	0.742	0.008	89
Black		1,154,269	0.586	0.725	0.793	0.015	54
Other (non-black, non-white) or unknown		209,379	0.608	0.733	0.835	0.019	44
<i>Labor force participation and income</i>							
Average participation rate, years -11 to -2<70%		688,194	0.581	0.696	0.914	0.013	73
Average participation rate, years -11 to -2≥70%		1,091,631	0.685	0.814	0.668	0.009	72
Average earnings, years -11 to -2 (\$2006)<\$10000		919,519	0.587	0.709	0.886	0.011	78
Average earnings, years -11 to -2 (\$2006)≥\$10000		860,306	0.707	0.833	0.635	0.011	60
<i>Represented by lawyer</i>							
Represented by lawyer		1,136,584	0.684	0.802	0.738	0.009	79
Not represented by lawyer		643,241	0.576	0.710	0.802	0.013	62
<i>Application type</i>							
SSDI		673,444	0.696	0.814	0.680	0.012	57
SSI or Concurrent (both SSDI and SSI)		1,106,381	0.614	0.741	0.817	0.010	80
<i>Education</i>							
Less than high school		726,027	0.649	0.776	0.741	0.010	75
High school graduate, no college		771,339	0.647	0.767	0.778	0.010	76
Some college		197,533	0.615	0.738	0.812	0.016	51
College graduate		84,926	0.673	0.786	0.715	0.021	34
<i>Health conditions (by diagnosis group)</i>							
Neoplasms (e.g., cancer)		228,564	0.630	0.740	0.825	0.014	58
Mental disorders		34,436	0.644	0.762	0.698	0.036	19
Mental retardation		272,508	0.591	0.759	0.749	0.018	42
Nervous system		31,336	0.602	0.813	0.578	0.034	17
Circulatory system (e.g., heart disease)		99,666	0.658	0.776	0.711	0.021	34
Musculoskeletal disorders (e.g., back pain)		191,883	0.670	0.787	0.681	0.015	45
Respiratory system		640,712	0.664	0.776	0.785	0.012	68
Injuries		75,079	0.632	0.760	0.757	0.025	31
Endocrine system (e.g., diabetes)		119,617	0.655	0.748	0.840	0.020	43
All other		86,024	0.661	0.790	0.741	0.022	34
<i>Year assigned to judge</i>							
1990		125,293	0.682	0.830	0.549	0.020	28
1991		145,136	0.717	0.842	0.564	0.016	36
1992		170,759	0.719	0.829	0.620	0.015	40
1993		162,315	0.687	0.792	0.736	0.018	40
1994		179,567	0.659	0.758	0.802	0.018	44
1995		197,684	0.629	0.738	0.850	0.016	54
1996		209,342	0.588	0.715	0.872	0.020	44
1997		197,951	0.589	0.723	0.852	0.017	49
1998		202,123	0.608	0.745	0.872	0.015	60
1999		184,045	0.626	0.768	0.775	0.018	43

ing office and day. Column 3 presents estimates from a regression of the judge allowance differential on covariates. Column 4 provides t – *statistics*. Of the 22 covariates, two have coefficients that are statistically different than 0 at the 95% level. Sex, age, race, previous earnings, past labor market participation, an indicator equal to 1 if the individual is a DI (but not SSI) applicant, an indicator for whether the case is represented by a lawyer, and education all have little explanatory power for whether or not the case was assigned to a lenient judge. All the estimated coefficients are small in comparison to the coefficients on the same variables in the allowance equation. The only statistically significant differences are for mental disorders and mental retardation. Those with mental disorders and mental retardation are assigned to judges who have 0.16% lower allowance rates than average. These coefficients are small, especially in comparison to the coefficients on the same variables in the allowance equation. The R^2 shows that the covariates explain .02% of the variation in judge specific allowance rates. Thus there is little evidence against the hypothesis of random assignment. Random assignment satisfies the independence assumption described in section 4.1. The next section provides some evidence on whether the rank and monotonicity conditions hold.

6.2 First Stage Estimates

Column 1 of table 2 shows the number of observations for different groups of DI cases heard by an ALJ. Column 2 shows the allowance rate at the ALJ stage for that group. Column 3 shows the allowance rate of the group three years after assignment to an ALJ. Columns 2 and 3 show that older individuals and high earners have relatively high allowance rates. Nevertheless, differences in allowance rates across subgroups are small.

Column 4 shows the estimated first stage regression coefficient $\hat{\theta}$ on the judge allowance differential from equation (4). Column 5 shows the standard error and column 6 the t -statistic. Column 4 shows that the probability of allowance is increasing in the judge allowance differential and column 5 shows that the increase is highly statistically significant for all the subgroups we consider. The estimated value of $\hat{\theta}$ for the full sample is .764, meaning that the probability that case i is allowed rises .764% for every 1% increase in the judge allowance differential (which measures the allowance rate on all cases other than case i). The main reason $\hat{\theta}$ is less than 1 is because we use allowance by the ALJ as the measure of the judge allowance differential in table 1, whereas we use allowance three years after assignment as

our key measure of allowance in table 2. Many cases denied by an ALJ are later allowed.

An important implication of the monotonicity assumption described in section 4.1 is that the probability of allowance is non-decreasing in the judge allowance differential for all subgroups of the population. If the allowance rate was rising in the judge allowance differential for some subgroups of the population, but was declining for others, it would show that lenient judges were less likely to allow benefits than strict judges for some types of cases. We do not observe this and thus cannot reject an important implication of the monotonicity assumption. Furthermore, estimates are highly significant, so the rank conditions hold.

6.3 Second Stage: the Effect of Disability Reciprocity on Labor Supply

TABLE 3: ESTIMATED EFFECT OF DI RECIPIENCY ON LABOR SUPPLY

Estimation procedure	Without Covariates:				With Covariates			
	Allowed	Denied	Difference	Std. Error	Demean Difference	Std. Error	Demean Difference	Std. Error
<i>Dependent Variable: Earnings</i>								
OLS	1442	5345	-3903	37	-3857	34	-4247	65
IV					-4059	140	-4023	127
<i>Dependent Variable: Participation</i>								
OLS	0.130	0.395	-0.265	0.002	-0.262	0.002	-0.271	0.002
IV					-0.256	0.006	-0.255	0.005

Notes: N=1,779,825. Covariates include all variables described in Table 1

Earnings, participation, and allowance are measured 3 years after assignment to a judge

For de-meaned difference, all variables are de-meaned from the hearing office-day average

Instrument is judge allowance differential

Table 3 presents estimates of the effect of disability reciprocity on earnings and labor force participation using both OLS and IV estimators. The first two columns show mean earnings and labor force participation (measured as earnings > \$100) for those allowed and denied benefits, three years after assignment to an ALJ. Column 3 shows the difference and column 4 the associated standard error. Columns 5 and 6 show OLS and IV estimates of de-meaned (by hearing office and day) earnings on similarly de-meaned allowance. The IV estimate is the estimate from equation (3). The next column includes the covariates listed in table 1. Parameter estimates are remarkably similar whether using IV or OLS, and whether using additional covariates or not.

Our preferred results are the IV estimates with no covariates. These estimates suggest that those who are allowed benefits earn on average \$4,059 per year less than their denied counterparts. IV estimated participation rates for allowed individuals are 25.6% lower than for their denied counterparts. Adding all the covariates listed in table 1 to this specification has only a tiny effect on the estimates. Recall that our estimation procedure should deliver consistent estimates, with or without covariates. Thus the fact that adding covariates does not change the estimates is reassuring.

Table 4 disaggregates the participation responses by demographics, earnings, and health conditions. Column 1 reports mean earnings for allowed individuals, column 2 for denied individuals, column 3 the difference, and column 4 the standard error. Column 5 reports the IV estimate of allowance on earnings and column 6 the standard error. Table 4 shows that the effect of DI allowance on participation is relatively small for college graduates and those with neoplasms (mostly cancer), mental disorders, and mental retardation, but is larger for high school graduates and those with diabetes. Participation responses are larger in the late 1990s than the early 1990s and early 2000s (recall that participation is measured three years after assignment, so assignment in 1999 refers to participation in 2002), potentially giving evidence that the work disincentive from DI is larger when it is easier to get a job. For most groups, the OLS estimates are very close to the IV estimates. One interesting exception is those with mental disorders. OLS estimates suggest decline in participation of 30.2% in response to allowance, whereas IV suggests a decline of only 19.4%. The low responsiveness of labor supply of those with mental illness is particularly surprising. Mental health is more difficult to monitor than many other health conditions. As a result, some analysts believe that many who claim mental illness are those who are healthy and would have worked in the absence of benefit allowance (Bound and Burkhauser, 1999). This turns out not to be the case.

Table 5 disaggregates the earnings responses by demographics, earnings, and health conditions. Results from this table are consistent with the results in table 4. For all groups, allowance reduces participation. Earnings estimates tend to be less precise than estimates for participation, however.

TABLE 4: ESTIMATED EFFECT OF DI RECIPIENCY ON PARTICIPATION, DISAGGREGATED

	OLS				IV	
	Allowed	Denied	Difference	Std. Error	Difference	Std. Error
<i>All groups</i>						
All groups	0.130	0.395	-0.265	0.002	-0.256	0.006
<i>Sex</i>						
Male	0.133	0.403	-0.270	0.002	-0.263	0.009
Female	0.127	0.386	-0.260	0.002	-0.250	0.008
<i>Age</i>						
45 or younger	0.174	0.467	-0.293	0.002	-0.290	0.009
45 to 54	0.116	0.359	-0.244	0.002	-0.254	0.009
55 to 59	0.094	0.282	-0.189	0.003	-0.248	0.019
60 to 64	0.099	0.179	-0.080	0.003	-0.069	0.023
<i>Race</i>						
Black	0.138	0.425	-0.287	0.003	-0.252	0.014
White	0.133	0.393	-0.260	0.002	-0.265	0.008
Other (non-black, non-white) or unknown	0.097	0.343	-0.246	0.004	-0.221	0.016
<i>Labor force participation and income</i>						
Average participation rate, years -11 to -2<70%	0.065	0.264	-0.199	0.002	-0.176	0.009
Average participation rate, years -11 to -2≥70%	0.165	0.531	-0.365	0.002	-0.327	0.012
Average earnings, years -11 to -2 (\$2006)<\$10000	0.087	0.325	-0.239	0.002	-0.202	0.008
Average earnings, years -11 to -2 (\$2006)≥\$10000	0.169	0.525	-0.356	0.002	-0.335	0.014
<i>Represented by lawyer</i>						
Represented by lawyer	0.130	0.400	-0.270	0.002	-0.274	0.008
Not represented by lawyer	0.129	0.389	-0.260	0.002	-0.226	0.010
<i>Application type</i>						
SSDI	0.175	0.429	-0.254	0.002	-0.277	0.016
SSI or SSI/SSDI concurrent	0.100	0.380	-0.280	0.002	-0.244	0.008
<i>Education</i>						
Less than high school	0.076	0.327	-0.251	0.002	-0.230	0.009
High school graduate, no college	0.148	0.425	-0.277	0.002	-0.279	0.009
Some college	0.210	0.479	-0.269	0.003	-0.261	0.019
College graduate	0.254	0.472	-0.219	0.004	-0.179	0.031
<i>Health conditions (by diagnosis group)</i>						
Neoplasms (e.g., cancer)	0.128	0.365	-0.237	0.003	-0.211	0.015
Mental disorders	0.155	0.457	-0.302	0.006	-0.194	0.043
Mental retardation	0.146	0.383	-0.237	0.003	-0.202	0.016
Nervous system	0.094	0.322	-0.227	0.007	-0.282	0.048
Circulatory system (e.g., heart disease)	0.140	0.392	-0.251	0.004	-0.237	0.027
Musculoskeletal disorders (e.g., back pain)	0.111	0.367	-0.256	0.003	-0.250	0.018
Respiratory system	0.136	0.419	-0.283	0.002	-0.285	0.009
Injuries	0.089	0.363	-0.274	0.004	-0.254	0.023
Endocrine system (e.g., diabetes)	0.147	0.468	-0.320	0.003	-0.367	0.022
All other	0.089	0.324	-0.235	0.004	-0.224	0.024
<i>Year assigned to judge</i>						
1990	0.100	0.323	-0.223	0.004	-0.234	0.023
1991	0.108	0.332	-0.224	0.004	-0.186	0.021
1992	0.115	0.362	-0.247	0.004	-0.277	0.020
1993	0.123	0.370	-0.246	0.004	-0.231	0.018
1994	0.137	0.395	-0.259	0.004	-0.293	0.015
1995	0.142	0.410	-0.268	0.003	-0.276	0.015
1996	0.141	0.431	-0.289	0.003	-0.273	0.014
1997	0.147	0.424	-0.277	0.003	-0.252	0.013
1998	0.140	0.410	-0.270	0.003	-0.265	0.014
1999	0.134	0.386	-0.252	0.003	-0.222	0.017

Notes: OLS estimates are in levels with no covariates

IV estimates use demeaned variables and the judge allowance differential as the instrument

Allowance and participation measured 3 years after assignment to an ALJ

TABLE 5: ESTIMATED EFFECT OF DI RECIPIENCY ON EARNINGS, DISAGGREGATED

	OLS				IV		
	Allowed	Denied	Difference	Std. Error	Difference	Std. Error	
<i>All groups</i>							
All groups	1442	5345	-3903	37	-4059	140	
<i>Sex</i>							
Male	1731	6231	-4500	48	-4695	234	
Female	1153	4405	-3252	36	-3438	174	
<i>Age</i>							
45 or younger	2085	6251	-4166	46	-4698	228	
45 to 54	1286	5026	-3740	45	-4038	205	
55 to 59	872	3728	-2855	69	-3218	427	
60 to 64	747	1773	-1026	59	-1496	460	
<i>Race</i>							
Black	1193	5175	-3982	48	-3675	249	
White	1581	5637	-4056	44	-4383	197	
Other (non-black, non-white) or unknown	1100	4431	-3331	67	-3143	381	
<i>Labor force participation and income</i>							
Average participation rate, years -11 to -2<70%	521	2654	-2132	24	-2025	171	
Average participation rate, years -11 to -2≥70%	1937	8124	-6186	51	-5847	287	
Average earnings, years -11 to -2 (\$2006)<\$10000	578	3025	-2448	23	-2134	165	
Average earnings, years -11 to -2 (\$2006)≥\$10000	2227	9661	-7434	66	-6888	370	
<i>Represented by lawyer</i>							
Represented by lawyer	1461	5474	-4013	41	-4431	190	
Not represented by lawyer	1402	5189	-3787	47	-3459	239	
<i>Application type</i>							
SSDI	2341	7649	-5307	70	-5787	418	
SSI or SSI/SSDI concurrent	840	4337	-3497	34	-3138	168	
<i>Education</i>							
Less than high school	638	3798	-3160	37	-3086	202	
High school graduate, no college	1584	5889	-4305	44	-4750	207	
Some college	2577	6953	-4375	74	-4077	479	
College graduate	4478	9245	-4767	187	-4368	1272	
<i>Health conditions (by diagnosis group)</i>							
Neoplasms (e.g., cancer)	1411	4850	-3439	59	-3634	344	
Mental disorders	2332	6751	-4420	179	-2038	1323	
Mental retardation	1350	4607	-3257	57	-2844	318	
Nervous system	545	3120	-2575	107	-2920	1079	
Circulatory system (e.g., heart disease)	1501	5425	-3924	95	-3926	723	
Musculoskeletal disorders (e.g., back pain)	1178	4823	-3645	67	-3294	385	
Respiratory system	1619	5974	-4355	50	-4942	245	
Injuries	774	4377	-3603	94	-3177	477	
Endocrine system (e.g., diabetes)	2070	7178	-5108	94	-6606	578	
All other	741	3727	-2986	77	-2589	437	
<i>Year assigned to judge</i>							
1990	851	4208	-3357	93	-2848	516	
1991	1078	4374	-3296	99	-3360	650	
1992	1154	4692	-3538	88	-4205	418	
1993	1213	4460	-3247	76	-4017	318	
1994	1444	4803	-3359	67	-3748	350	
1995	1661	5415	-3754	70	-4317	357	
1996	1716	5976	-4260	68	-4366	348	
1997	1773	6016	-4243	71	-3766	316	
1998	1704	5991	-4287	71	-4745	326	
1999	1566	5555	-3989	71	-4078	367	

Notes: OLS estimates are in levels with no covariates

IV estimates use demeaned variables and the judge allowance differential as the instrument
Allowance and earnings measured 3 years after assignment to an ALJ

6.4 Dynamics of the Response

Figure 2 shows the earnings and participation responses to benefit allowance. The top left panel shows annual earnings for those who are allowed and those who are denied DI benefits both before and after the date of assignment to a judge. Prior to assignment, those who are allowed benefits have higher earnings than their denied counterparts. By the year of assignment, earnings for allowed and denied individuals are similar. Three years after assignment, earnings of those allowed benefits average \$1,490 while earnings of those denied average \$3,842, a difference of \$2,352. Differences in earnings between those allowed and those denied emerge rapidly, are very stable 2-5 years after assignment, and decline slowly thereafter.⁸

Consistent with the evidence on earnings, the bottom-left panel of figure 2 shows that 10 years prior to assignment, those who are subsequently allowed benefits have participation rates that are seven percentage points higher than those subsequently denied benefits. Three years after the date of assignment, those who are allowed benefits have participation rates that are 17 percentage points lower than those who are denied. Afterwards, the differences between the two groups narrow slightly.

The right-hand panels show IV estimates of earnings and labor force participation of allowed and denied individuals both before and after assignment to a judge. We estimate the effect of allowance for each year relative to the assignment year, as predicted by the judge allowance differential. We then infer the level of labor supply using the approach described in section 4.4. Earnings and participation rates of the two groups are virtually identical before assignment to a judge, which is unsurprising given that our instrument is uncorrelated with earnings prior to assignment. However, after assignment, earnings and participation of allowed individuals are lower. The top right panel shows that three years after the time of assignment, the difference in earnings between the two groups is \$2,314 (virtually identical to the OLS estimate) and remains very stable thereafter. Similarly, the bottom right panel shows that three years after assignment the difference in participation between the two groups is 14.8%, and does not change much thereafter. The standard errors are tiny and thus omitted. For example, the standard error on the effect of allowance on participation averages less than

⁸Some care must be taken in interpreting the decline in earnings of denied individuals 5 years after assignment because after 5 years, 7% of all sample members are at least 65 and after 10 years 21% are at least 65. These people are eligible for full Social Security benefits, even if they were initially denied.

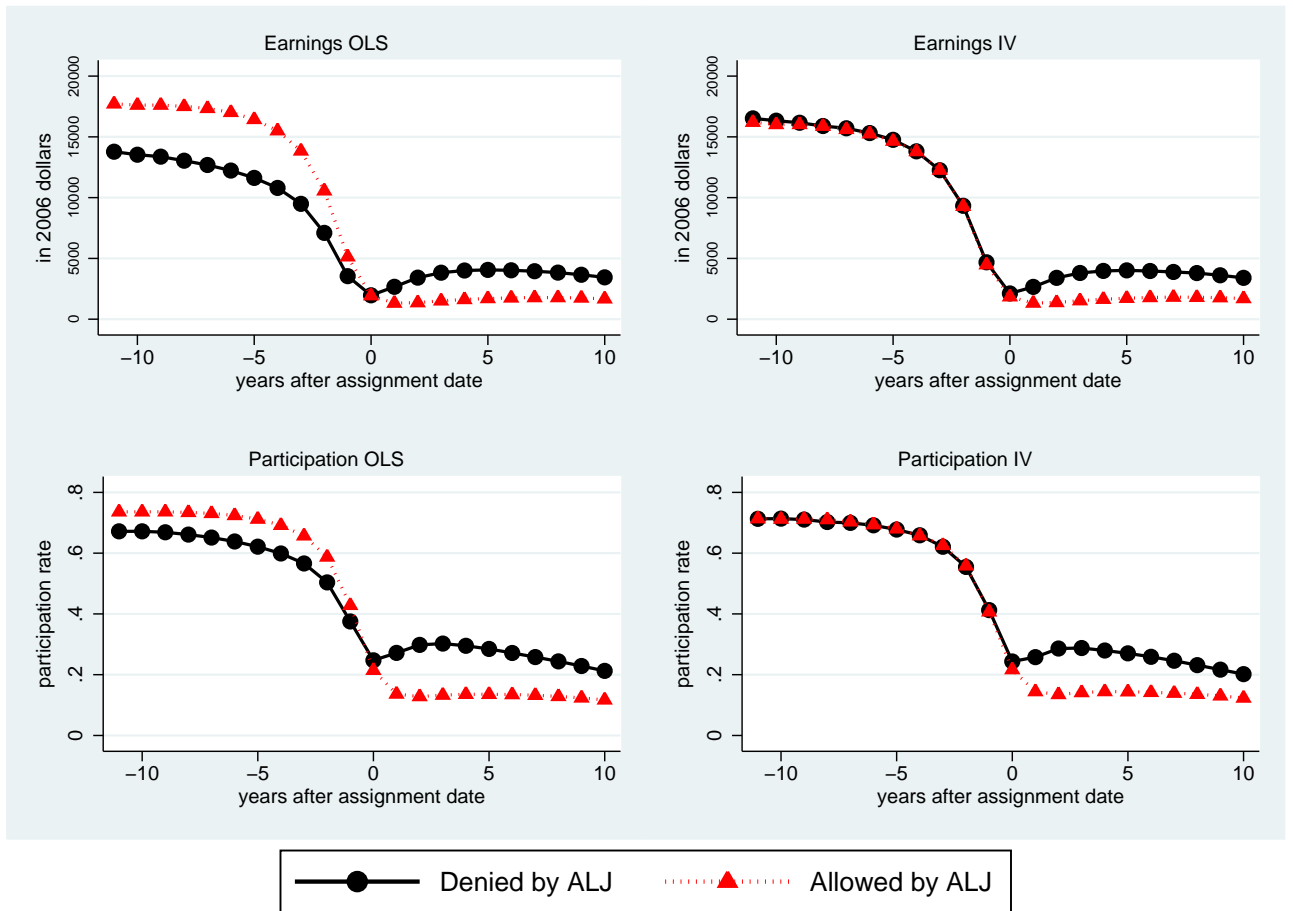


Figure 2: DYNAMICS OF EARNINGS AND PARTICIPATION, ALLOWED VERSUS DENIED BY ALJ.

1% when using either OLS or IV.

Note that the IV estimate of the effect of allowance on earnings 3 years after allowance is smaller in figure 2 (\$2,314) than in table 3 (\$4,059). The difference arises because figure 2 uses allowance by the ALJ, whereas table 3 uses allowance 3 years after assignment to the ALJ. Section 6.5 discusses the difference between allowance by an ALJ and allowance at any point in time.

6.5 Appeals, Re-applications, and Subsequent Allowance

The left panel of figure 3 shows the share of denied (at the ALJ stage) individuals who are reapplying/appealing and allowed relative to when they are assigned to a judge.⁹ It

⁹We use data from ACAPS and LOTS to identify denied applicants who successfully appealed at either the Appeals Council or the Federal Court level. We use data from SSA 831 files, MBR (Master Beneficiary

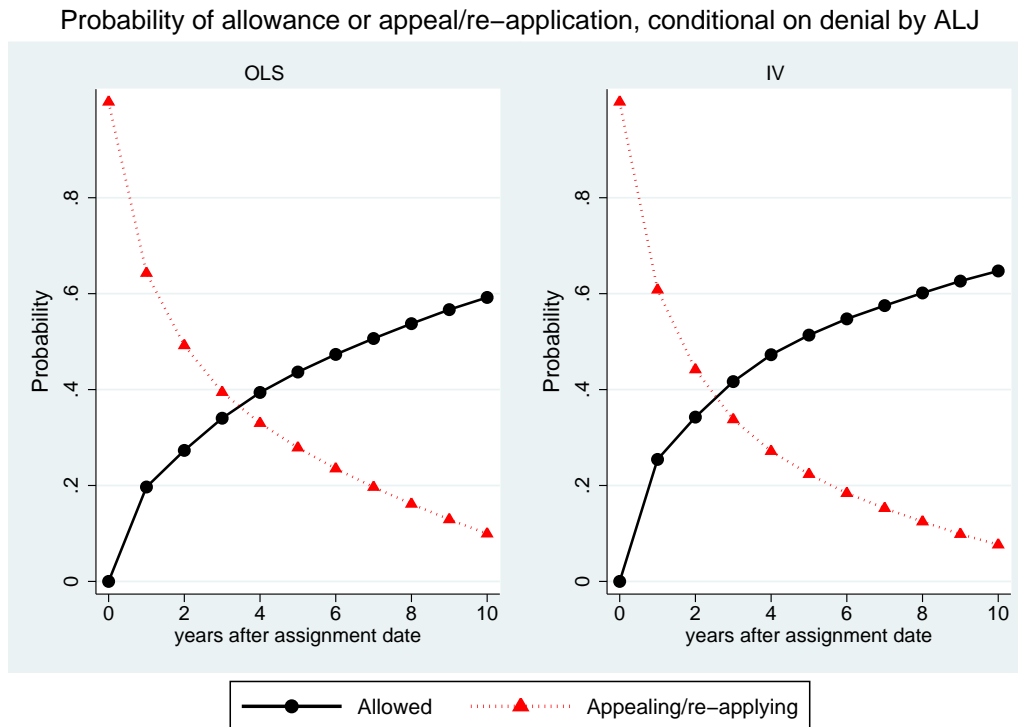


Figure 3: ALLOWANCE AND APPEALS/RE-APPLICATIONS FOLLOWING DENIAL BY ALJ.

shows that 35% of all applicants denied by an ALJ were allowed benefits within three years. Furthermore, many initially denied individuals continue to reapply or appeal for many years after their initial denial. Three years after assignment to an ALJ, 40% of all individuals denied benefits are still in the process of appealing or reapplying for benefits. Because most denied applicants have either been allowed benefits or have given up applying for benefits by this point, we focus on allowance rates and labor supply decisions three years after assignment to a judge in this paper.

The right panel of figure 3 presents the share of initially denied individuals who are allowed benefits or are still in the process of reapplying/appealing relative to when they are assigned to a judge, where the shares are instrumented using the judge allowance differential.¹⁰ Thus

Record), and SSR (Supplemental Security Record) to identify denied applicants who reapplied for benefits and were allowed at either the DDS, Reconsideration, ALJ, Appeals, or Federal Court level stage.

¹⁰Using the set of individuals who were denied by an ALJ, we regress de-meaned allowance on a set of wave dummies and predicted de-meaned ALJ allowance \times wave dummies (where allowance is predicted using the judge allowance differential). The estimated coefficient on allowance \times wave measures increased probability of allowance at a given wave conditional on initial denial. Next, we regress de-meaned appeal on a set of wave dummies and predicted de-meaned ALJ allowance interacted with wave dummies (where allowance is predicted using the judge allowance differential). The estimated coefficient on allowance \times wave measures

the left panel uses OLS and the right panel uses IV, where initial denial is instrumented using the judge allowance differential. Those affected by the instrument are likely the marginal cases who have a better chance of final allowance than others denied benefits. For this reason we might think that subsequent allowance rates of those initially denied would be higher when instrumented. In fact, this is the case, although the OLS estimates and the IV estimates are similar. For example, the right panel figure 3 shows that for those initially denied benefits, the IV estimate of allowance is 42% three years after assignment, versus 35% from the OLS estimates.

Sections 6.4 and 6.5 show that most denied applicants do not work, but engage in re-applications and appeals until they get DI benefits. This has an important effect on our main estimated effects. Table 3 shows that DI benefit allowance reduces earnings \$4,059 per year when measuring earnings and allowance three years after assignment to an ALJ. However, DI benefit allowance reduces earnings \$4,915 per year when measuring earnings and allowance five years after assignment to an ALJ.

6.6 Estimates of the Distribution of Labor Supply, Allowance, and Appeal Responses: Marginal Treatment Effects

Using the the Marginal Treatment Effects approach described in section 4.3 and appendix C, this section shows how DI benefit allowance affects the distribution of labor supply, subsequent allowance, and appeals.

The left panel of figure 4 shows the earnings decline and the right panel shows the participation decline of the marginal case when allowed (i.e., the Marginal Treatment Effect). We use third order polynomials for both the instrument and the endogenous variable (de-meaned allowance) when estimating equations (5) and (6). Both Akaike’s information criterion and the Bayesian information criterion reject quadratic and quartic specifications in favor of the cubic. Furthermore, results from the quartic specification are very similar to the cubic specification. Since polynomial smoothers have poor endpoint properties, we show estimated MTEs over the middle 90% of the distribution of the judge allowance differential. Based upon Monte Carlo experiments, we found our procedure produced little bias over the middle 90% of the distribution. Figure 4 also shows bootstrapped 95% confidence intervals.

increased probability of allowance at a given wave conditional on initial denial. The right panel of figure 3 plots the coefficient on predicted allowance \times wave for both the allowance and appeal equations.

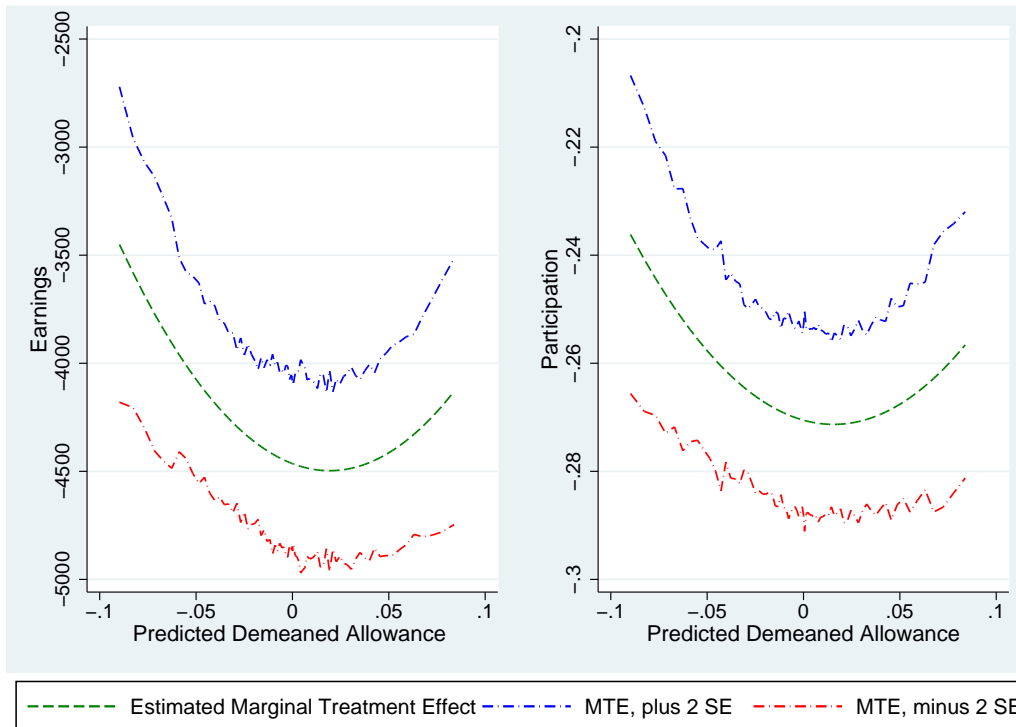


Figure 4: EARNINGS AND PARTICIPATION DECLINE WHEN ALLOWED FOR MARGINAL APPLICANT.

On average, annual earnings and participation decline \$4,300 and 26% in response to benefit allowance, similar to the main estimates reported in table 3. However, there is heterogeneity in the declines. The earnings decline is \$3,451 for the marginal applicant heard by an ALJ who is stricter than 95% of all judges, whose decisions lead to allowance rates that are nine percentage points below the average three years after assignment. The earnings decline is \$4,131 for the marginal applicant heard by an ALJ who is more lenient than 95% of all judges, whose decisions lead to allowance rates that are eight percentage points above the average three years after assignment. When allowance rates rise, the labor supply response of the marginal case also rises. This result is consistent with the notion that as allowance rates rise, more healthy individuals are allowed benefits. These healthier individuals are more likely to work when not receiving DI benefits and thus their labor supply response to DI receipt is greater. Nevertheless, the differences in the earnings response are not statistically significant and is modest in size.

Figure 5 shows how allowance three years after assignment to an ALJ affects allowance and

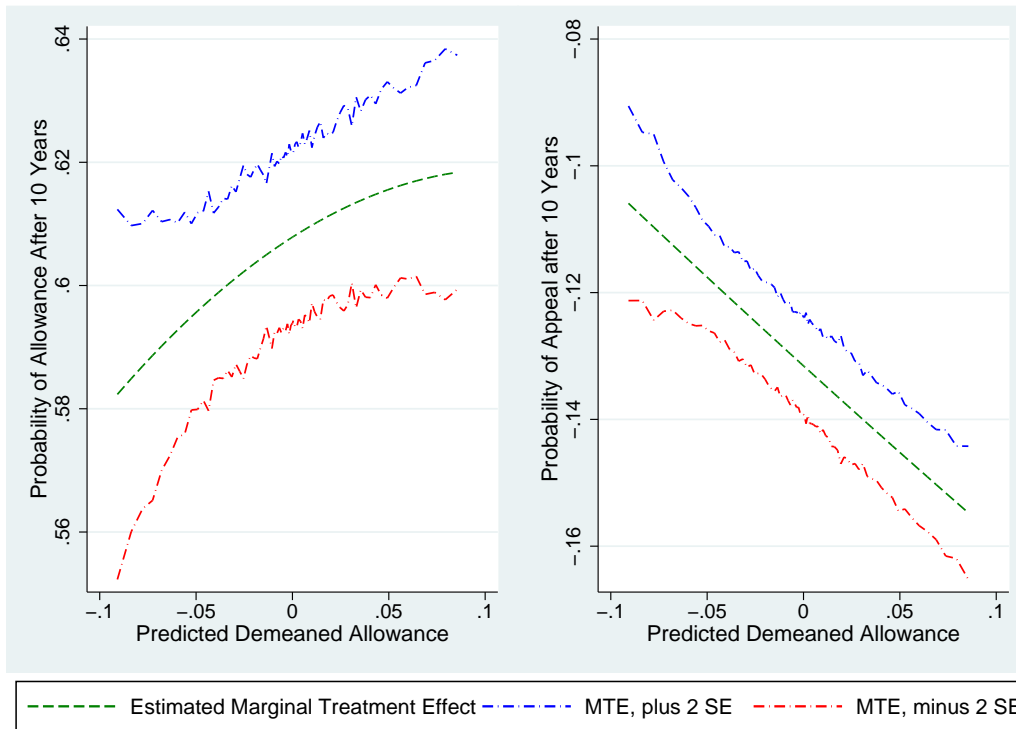


Figure 5: PROBABILITY OF ALLOWANCE AND APPEAL 10 YEARS AFTER ASSIGNMENT TO AND ALJ FOR MARGINAL APPLICANT.

appeal 10 years afterwards. The left panel shows that allowance three years after assignment to an ALJ increases the probability of allowance 10 years after assignment by .60 on average. Put differently, 40% of those not allowed three years after assignment were allowed benefits 10 years after assignment. For marginal applicants assigned to lenient judges and are not allowed three years after assignment, the probability of allowance 10 years after assignment is $(1-.62)=.38$. For those assigned to strict ones it is $(1-.58)=.42$. The right panel of figure 5 shows that allowance three years after assignment reduces the average probability of appealing 10 years after assignment by .13, so 13% of those not allowed three years after assignment are still appealing 10 years after assignment. For marginal applicants assigned to lenient judges it is 15% and for those assigned to strict judges it is 11%. Figure 5 shows that for a marginal applicant not allowed three years after assignment to a lenient judge, the probability that she is either allowed benefits or appeals 10 years after assignment is .38 and .15, respectively. Thus conditional on not being allowed, $1-(.38+.15)=47\%$ of those who do not get benefits and do not appeal or re-apply. For those assigned to the stricter judges, the numbers are

42% for allowance, 11% for appealing, and $1-(.42+.11)=47\%$ for not being allowed and not appealing.

Recall that marginal applicants assigned to lenient judges and not allowed benefits are healthier than those assigned to strict judges. Thus it is unsurprising that they are less likely to be allowed benefits in the future. Nevertheless, the right panel of figure 5 shows that these people continue trying to get the benefit.

6.7 Elasticity of Labor Supply with Respect to the After-Tax Wage

In this section we present estimates of the effect of DI on the after-tax (and after DI benefit) wage, as well as the earnings and participation elasticity with respect to the after-tax wage. Table 6 shows participation and earnings elasticities with respect to the after-tax wage, which we calculate as follows:

$$\varepsilon_{y,w} = \frac{(E[y_i|A_i = 0] - E[y_i|A_i = 1]) / (E[y_i|A_i = 0] + E[y_i|A_i = 1])}{(E[w_i|A_i = 0] - E[w_i|A_i = 1]) / (E[w_i|A_i = 0] + E[w_i|A_i = 1])} \quad (12)$$

where $E[y_i|A_i = 0]$ is the average outcome variable (either mean earnings or participation) of denied individuals and $E[y_i|A_i = 1]$ is the average outcome variable for allowed individuals. $E[w_i|A_i = 0]$ is the average after-tax wage for denied individuals and $E[w_i|A_i = 1]$ is the average after-tax wage for allowed individuals. The after-tax wage is defined as the income gain from wage earnings plus DI benefits (net of federal, state and payroll taxes) when working. Appendix B presents the details of how we estimate after-tax wages.

We first predict the distribution of pre-tax wages for everyone in the sample. The first row of table 6 shows that the average predicted pre-tax wage of workers in our sample is \$11,047. Next, we use Social Security earnings histories, the year, and state of residence to calculate DI/SSI benefits for everyone in the sample. The second row shows that the average DI/SSI benefit is \$9,023. The third row shows the DI/SSI benefit reduction resulting from high earnings. People who are allowed benefits will lose most of their benefits if they work. The fourth column shows that the average Federal, State, and payroll tax paid by those working is \$2,081. The fifth row is after-tax income, which is labor income plus the DI/SSI benefit, less DI/SSI reductions and taxes. The sixth row shows the average after-tax wage, defined as the difference between the after-tax income if working and the after-tax income if not working. The after-tax wage is \$8,966 on average for those who are denied benefits

TABLE 6: EARNINGS AND PARTICIPATION ELASTICITIES

	Means				Allowed versus Denied Percent Change/100	Elasticity
	Allowed		Denied			
	working	not working	working	not working		
Pre Tax Wage Income	11,047	0	11,047	0		
DI/SSI benefit if Allowed	9,023	9,023	0	0		
DI/SSI benefit reduction	4,367	0	0	0		
Taxes	2,081	0	2,081			
After Tax Income*	13,622	9,023	8,966	0		
After Tax Wage**	4,599		8,966		0.64	
Earnings	1,412		5,471		1.18	1.83
Participation	0.135		0.391		0.97	1.51

Notes: Earnings and Participation estimates are from Table 3

Elasticity is an arc elasticity: see equation (12)

*After Tax Income is sum of pre-tax wage income and DI/SSI benefit, less DI/SSI benefit reduction and taxes

**After tax wage = after tax income if working - after tax income if not working

and is \$4,599 for those allowed benefits. Because most DI beneficiaries who are working earn above the SGA level, most people who are allowed benefits will lose their DI benefit if they work. Thus, most of the gain from working is lost when the individual has been allowed DI benefits. We take estimates of earnings and participation declines when allowed (i.e., $E[y_i|A_i = 0] - E[y_i|A_i = 1]$) from table 4 and use the procedure in section 4.4 to infer $E[y_i|A_i = 1]$ and $E[y_i|A_i = 0]$. Table 6 shows that the implied earnings elasticity is 1.8 and participation elasticity is 1.5. While our estimates suggest that most DI/SSI applicants would not work even if denied benefits, labor supply is elastic for this group of individuals.

In order to infer a labor supply elasticity with respect to the after-tax wage from the labor supply response to DI allowance, we make two strong assumptions. First, we assume that individuals are only responding to current work incentives and not future incentives. However, individuals must keep their earnings below the SGA level in order to appeal or reapply for benefits. Therefore, the low earnings level of denied applicants may be caused by the incentives to keep earnings low in order to appeal or to reapply for benefits. Thus we are overstating the percent difference in the present value of future after-tax wages and understating the labor supply elasticity. To better assess this issue, we measure the labor supply response to allowance five years after allowance. Figures 1 and 3 show that after five years most DI/SSI applicants have either received benefits or have given up on the application

process. Five years after assignment to an ALJ, the participation elasticity is 1.6, slightly higher than the elasticity three years after assignment.

Second, we omit the value of health insurance benefits from both work and from DI/SSI receipt. When individuals lose their DI and SSI benefits due to high earnings, they also typically lose their Medicare and Medicaid health insurance benefits. Thus the percent change in the after-tax wage is likely larger and the true labor supply elasticity is smaller than what we report in table 6. As such, our two strong assumptions lead to two potentially important, but offsetting, biases.

7 Conclusion

This paper estimates the effect of Disability Insurance receipt on labor supply. Using instrumental variables procedures, we address the fact that those allowed benefits are a selected sample. We find that benefit receipt reduces labor force participation by 26 percentage points three years after a disability determination decision, although the reduction is smaller for those over age 55, college graduates, and those with mental illness. Over 60% of those denied benefits are allowed benefits within 10 years. OLS estimates are similar to instrumental variables estimates. The participation elasticity with respect to the after-tax wage is 1.5.

References

- [1] Autor, D. and M. Duggan (2006), “The Growth in the Social Security Disability Rolls: A Fiscal Crisis Unfolding”, *Journal of Economic Perspectives* 20(3), 71-96.
- [2] Benitez-Silva, H., M. Buchinsky, H. Chan, J. Rust, and S. Sheidvasser (1999), “An empirical analysis of the social security disability application, appeal, and award process”, *Labour Economics* 6(2), 147-178.
- [3] Benitez-Silva, H., M. Buchinsky, and J. Rust (2011), “Induced Entry Effects of a \$1 for \$2 Offset in SSDI Benefits”, *manuscript*.
- [4] Bjorklund, A. and R. Moffitt (1987), “The Estimation of Wage Gains and Welfare Gains in Self-Selection Models”, *Review of Economics and Statistics* 69(1), 42-49.
- [5] Bound, J. (1989), “The Health and Earnings of Rejected Disability Insurance Applicants”, *The American Economic Review* 79(3), 482-503.
- [6] Bound, J. (1991), “The Health and Earnings of Rejected Disability Insurance Applicants: Reply”, *The American Economic Review* 81(5), 1427-1434.
- [7] Bound, J. and R.V. Burkhauser (1999), “Economic analysis of transfer programs targeted on people with disabilities”, In: Ashenfelter, O. and D. Card (Eds.), *Handbook of Labor Economics*, Vol. 3, Part 3, 3417-3528.
- [8] Bound, J., T. Stinebrickner, and T. Waidmann (2010), “Health, Economic Resources and the Work Decisions of Older Men”, *Journal of Econometrics* 156(1), 106-129.
- [9] Chen, S. and W. van der Klaauw (2008), “The Effect of Disability Insurance on Labor Supply of Older Individuals in the 1990s”, *Journal of Econometrics* 142(2), 757-784.
- [10] David, M., R. Little, M. Samuhel, and R. Triest (1986), “Alternative Methods for CPS Income Imputation”, *Journal of the American Statistical Association* 81(393), 29-41.
- [11] De Jong, P., M. Lindeboom, B. van der Klaauw (2011), “Screening Disability Insurance Applications”, *Journal of the European Economic Association* 9(1), 106-129.
- [12] French, E. and J. Jones (2011), “The Effects of Health Insurance and Self-Insurance on Retirement Behavior”, *Econometrica* 79(3), 693-732.
- [13] French, E. and C. Taber (2011), “Identification of Models of the Labor Market”, In: Ashenfelter, O. and D. Card (Eds.), *Handbook of Labor Economics*, Vol. 4, Part 1, 537-617.
- [14] Hausman, J., W. Newey, T. Woutersen, J. Chao, and N. Swanson (2007) “Instrumental Variable Estimation with Heteroskedasticity and Many Instruments”, *manuscript*.
- [15] Heckman, J. and E. Vytlacil (2005), “Structural Equations, Treatment Effects, and Econometric Policy Evaluation”, *Econometrica* 73(3), 669-738.
- [16] Heckman, J., S. Urzua, and E. Vytlacil (2006), “Understanding Instrumental Variables in Models with Essential Heterogeneity”, *Review of Economics and Statistics* 88(3), 389-432.
- [17] Hu, J., K. Lahiri, D. Vaughan, and B. Wixon (2011), “A Structural Model of Social Security’s Disability Determination Process”, *The Review of Economics and Statistics* 83(2), 348-361.
- [18] Imbens, G. and J. Angrist (1994), “Identification and Estimation of Local Average Treatment Effects”, *Econometrica* 62(2), 467-475.

- [19] Lahiri, K., J. Song, and B. Wixon (2008), “A model of Social Security Disability Insurance using matched SIPP/Administrative data”, *Journal of Econometrics* 145(1-2), 4-20.
- [20] Low, H. and L. Pistaferri (2011), “Disability Risk, Disability Insurance and Life Cycle Behaviour”, *NBER Working Paper 15962*.
- [21] Meyers, R., *Social Security*, 1993.
- [22] Paletta, D., “Disability-Claim Judge has Trouble Saying ‘No’; Near Perfect Approval Record; Social Security Program Strained”, *Wall Street Journal*, May 19, 2011
- [23] Parsons, D.O. (1991), “The Health and Earnings of Rejected Disability Insurance Applicants: Comment”, *American Economic Review* 81(5), 1419-1426.
- [24] Social Security Advisory Board, *Improving the Social Security Administration’s Hearing Process*, Sept. 2006. Available at <http://www.ssab.gov/documents/HearingProcess.pdf>.
- [25] Taylor, M. (2007), “Refugee Roulette in an Administrative Law Context: the Deja Vu of Decisional Disparities in Agency Adjudication”, *Stanford Law Review* 60(2), 475-502.
- [26] U.S. Social Security Administration, *Social Security Bulletin Annual Statistical Supplement*, various years.
- [27] U.S. Social Security Administration, *Annual Statistical Report on the Social Security Disability Insurance Program*, 2007.
- [28] U.S. Social Security Administration, *Hearings, Appeals and Litigation Law Manual (HALLEX)*, 2009.
- [29] von Wachter, T., J. Song, and J. Manchester (2011), “Trends in Employment and Earnings of Allowed and Rejected Applicants to the Social Security Disability Insurance Program”, *The American Economic Review*, forthcoming.

Appendix A: Data Appendix

We use the universe of all DI appeals heard by ALJs, 1990-1999. We use data from the Office of Hearings and Appeals Case Control System (OHACCS), the Hearing Office Tracking System (HOTS), the Appeals Council Automated Processing System (ACAPS), the Litigation Overview Tracking System (LOTS), the SSA 831 file, SSA Master Earnings file (MEF), the Master Beneficiary Record (MBR), the Supplemental Security Record (SSR), and the SSA Numerical Identification (NUMIDENT) file.

The OHACCS data contain details of Social Security DI and SSI cases adjudicated at the ALJ level (and also contain limited information on cases heard at the Appeals Council, Federal or Supreme Court). In addition to SSI and DI, they include cases involving Retirement and Survivors Insurance as well as Medicare Hospital insurance. We keep only the SSI and DI cases. The OHACCS data are used for administering DI and SSI cases, and are thus very accurate. The OHACCS data include information on the judge assigned to the case, the hearing office, the date of assignment, and the outcome of the case (such as allowed or denied). It also has data on the claimant's Social Security number, and type of claim (DI versus SSI). The data include all cases filed in 1982 to present. Because our earnings data go back to 1980, and we use earnings data 10 years prior to assignment, we use OHACCS data 1990-2009.

Until 2004, individual hearing offices maintained their own data, called the Hearing Office Tracking System (HOTS). These data were then uploaded to the OHACCS system. We found some missing cases in the OHACCS system. These are apparently the result of HOTS data not being properly uploaded. The problem occurs in about 1% of all cases. For these cases we augment the OHACCS data with HOTS. After 2004, all uploading of data is automatic, and thus there are no problems with missing data.

OHACCS also contains Appeals Council records. However, data on Appeals Council decisions are sometimes missing from OHACCS. Thus we use the Appeals Council Automated Processing System (ACAPS) data to track actions on cases heard at the Appeals Council level. ACAPS is the Appeals Council's data for administration of cases.

The Litigation Overview Tracking System (LOTS) data are used for administration of cases that are heard at the Federal or Supreme Court level. These data provide information on which cases that were denied at the Appeals Council level were appealed at the Federal

Court level. We combine the LOTS data with information provided by the Federal Court to determine whether the cases was eventually allowed or denied.

The SSA 831 data have information on the details of the DI application received at the Disability Determination Service. The data include information on the type of application (whether DI or SSI or concurrent) and whether the claim is on one's own earnings history or on the history of a spouse or parent. It also has all the information relevant for determining whether the application should be allowed, either through a medical listing or the vocational grid. Thus we have detailed medical information, such as the health condition of the individual. Because of the vocational grid, we have information on age, education, industry and occupation. We also have some other demographic information such as sex. Since a new 831 record is established whenever a new application is filed and adjudicated, we use information in the 831 file to identify those who reapplied for benefits.

The Master Earning File (MEF) includes annual longitudinal earnings data for the US population. It includes not only individuals' annual Social Security covered earnings from 1951 to the present (which we use to calculate the Primary Insurance Amount for DI benefits), but also individuals' annual wages directly taken from the W-2 starting from 1978. We use data back to 1981. Wage earnings are not top-coded, but self-employment earnings are top coded until 1992. Our earnings measure is the sum of wage earnings and self employment earnings, which we topcode at \$200,000 per year.

The Master Beneficiary Record (MBR) includes beneficiary and payment history data for OASDI program. The Supplemental Security Record (SSR) contains information on individuals applying for SSI benefits. We use the MBR and SSR to identify disability benefit award status of individuals.

Lastly, we use the SSA NUMIDENT for information on date of death. The NUMIDENT file includes information from the Social Security Number application form such as name, date of birth and Social Security number. Once the individual dies, the date of death is placed on the file. We treat individuals who die as missing, although we found that this assumption does not affect our results.

For Figure 1 and A1 we use all cases filed 1989-1999. We include all primary disability – auxiliary benefit claimants (i.e., child and spouse) are excluded. We make no other sample restrictions for these cases. For all other figures and tables, we begin with the universe of all

cases adjudicated by an ALJ and make the following sample restrictions, described in Table A1:

1. We drop all Medicare cases. These Medicare cases are typically disputes over whether Medicare will pay for certain medical treatments.
2. We drop all remand cases (cases sent to Appeals Council, then sent back to the hearing office). We drop these because this would lead to double counting of cases, as a remand is a case that was already heard by an ALJ.
3. We drop cases with a missing Social Security number. This leaves us with 3,525,787 cases for 1990-1999.
4. We drop all cases younger than 35 or older than 64.
5. We drop cases with missing judge or hearing office information.
6. We drop cases that were previewed prior to being assigned to a judge. These cases are extremely likely to be critical cases that are reviewed by a senior attorney.
7. We drop cases where the claim is against the earnings record of a spouse or parent.
8. We drop cases with missing education data. This leaves us with 1,779,825 cases.

Table A2 presents sample means.

TABLE A1: SAMPLE SELECTION	
	Sample size
Original sample	3,525,787
Number of drops	
(1): Age at assignment <35 or >64	792,939
(2): Missing judge or hearing office information	174
(3): case is pre-viewed	794,470
(4): DI Child case	30,221
(5): Survivor case	3,564
(6): Missing education data	124,594
total number of sample dropped (sum of drops 1-6)	1,745,962
Remaining sample	1,779,825

Reapplications and appeals

Figure A1 uses the same data as in figure 1 shows the total share of initial claims allowed at any level. It also disaggregates those cases not allowed into those where the application

TABLE A2: MEANS

Female		0.497
	<i>Age</i>	
45 or younger		0.364
45 to 54		0.424
55 to 59		0.138
60 to 64		0.074
	<i>Race</i>	
Black		0.234
Other (non-black, non-white) or unknown		0.118
	<i>Labor force participation and income</i>	
Average participation rate, years -11 to -2 \geq 70%		0.922
Average earnings, years -11 to -2 (\$2006) \geq \$10000		0.483
Not represented by lawyer		0.639
SSDI (not SSI or SSI/SSDI concurrent)		0.378
	<i>Education</i>	
Less than high school		0.408
High school graduate, no college		0.433
Some college		0.111
College graduate		0.048
	<i>Health conditions (by diagnosis group)</i>	
Neoplasms (e.g., cancer)		0.128
Mental disorders		0.019
Mental retardation		0.153
Nervous system		0.018
Circulatory system (e.g., heart disease)		0.056
Musculoskeletal disorders (e.g., back pain)		0.108
Respiratory system		0.360
Injuries		0.042
Endocrine system (e.g., diabetes)		0.067
All other		0.048
	<i>Year assigned to judge</i>	
1990		0.070
1991		0.082
1992		0.096
1993		0.091
1994		0.101
1995		0.111
1996		0.118
1997		0.112
1998		0.114
1999		0.104
Allowance by ALJ		0.645
Allowance 3 years after assignment to an ALJ		0.769
Participation 3 years after assignment to an ALJ		0.191
Earnings 3 years after assignment to an ALJ		2345
N=1,779,825		

process ended versus those who were re-applying or appealing a denial. 10 years after the initial filing, 67% of all claimants were allowed benefits, 27% were denied and the process ended, and 6% were still in the process of applying for benefits. Together, figures 1 and A1 emphasize the fact that re-applications and appeals are important for understanding the DI system.

Appendix B: Calculation of the After-Tax Wage

We estimate after-tax wages as follows. We impute pre-tax wage income of non-working DI applicants using a predictive mean matching regression approach, described in David et

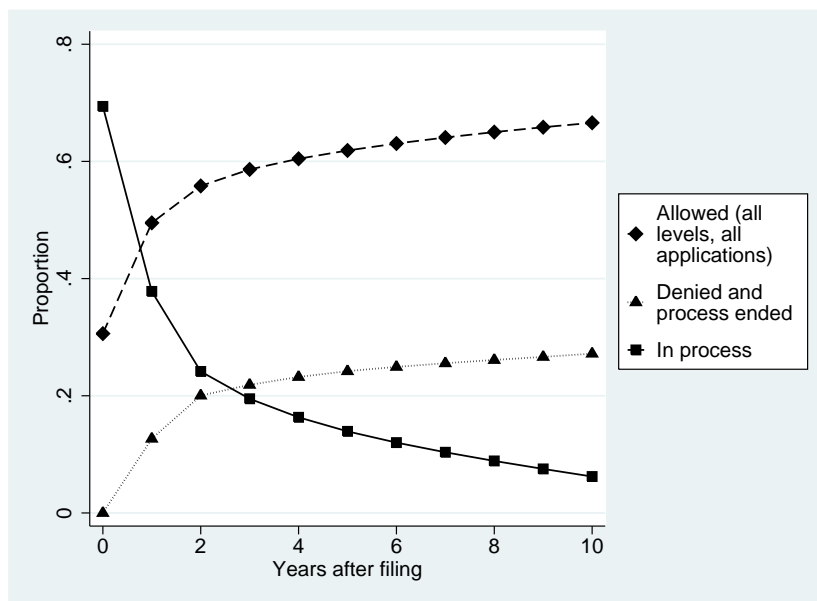


FIGURE A1: SHARE OF ALL DI/SSI APPLICANTS WHO ARE ALLOWED BENEFITS, ARE APPLYING/APPEALING, AND SHARE WHO ARE DENIED, NO LONGER RE-APPLYING OR APPEALING

al. (1986). We first regress income y on the vector of observable variables w described in table 1, yielding $y = wb + \vartheta$. Second, for each sample member i we calculate the predicted value $\hat{y}_i = w_i \hat{b}$, and for each member with an observed value of y_i we calculate the residual $\hat{\vartheta}_i = y_i - \hat{y}_i$. Third, we sort the predicted value \hat{y}_i into deciles. Fourth, for non-working individuals, we impute ϑ_i by finding a random individual j with a value of \hat{y}_j in the same decile as \hat{y}_i , and setting $\vartheta_i = \hat{\vartheta}_j$. The imputed value of y_i is $\hat{y}_i + \hat{\vartheta}_j$. We estimate models for DI and SSI beneficiaries separately because the two groups face different labor supply incentives.

Once we impute pre-tax wage income for every member of the sample, we calculate the after-tax wage. First, we use year, state, and the Social Security earnings data to calculate the DI/SSI benefit for everyone in the sample. We impute SSI benefits using state and year for those drawing SSI benefits. Second, we predict the distribution of post-tax wages plus DI benefits (i.e., the difference between income if working and income if not working) for everyone in our data using the federal, state, and local tax schedule shown in French and Jones (2011). Those who are allowed benefits will have DI benefits if predicted income from working is below the SGA limit (\$6,000 in 1993 to \$9,360 in 2002). If income is above the SGA limit, then the individual will lose benefits. If the individual is denied benefits, then

there are no DI benefits to be lost when working. We assume that SSI benefits above the disregard level are reduced 50 cents for each dollar of earnings, until all SSI benefits are lost. Third, we take the sample average after-tax wage if denied and allowed, which is our measure of $E[w_i|A_i = 0]$ and $E[w_i|A_i = 1]$. Our main limitation on these measurements is that ideally we should know family structure and all sources of income to calculate taxes. Family structure is important because the DI/SSI benefit depends on marital status and the number of dependants. Unfortunately, we do not have this information, so we assume that the individual can claim no dependants for the DI/SSI benefit and is not pushed into a higher marginal tax bracket from spousal or other non-labor income.

Appendix C: Derivations

Marginal Treatment Effects

All derivations in this are purely for completeness – they are straightforward adaptations of that discussed in Heckman et al. (2006) or French and Taber (2010). Define A_i as a 0-1 indicator =1 if individual i is allowed benefits, y_i is either earnings or participation. Individual i 's earnings are characterized by

$$y_i = \begin{cases} y_{1i} & \text{if } A_i = 1 \\ y_{0i} & \text{if } A_i = 0 \end{cases} \quad (13)$$

where

$$\begin{aligned} y_{1i} &= \phi + X_i\delta_A + u_{1i} \\ y_{0i} &= X_i\delta_A + u_i \end{aligned} \quad (14)$$

Combining equations (13) and (14) yields:

$$y_i = A_i\phi_i + X_i\delta_A + u_i. \quad (15)$$

where $\phi_i = \phi + u_{1i} - u_i$. Allowance is determined by

$$A_i = 1\{g(Z_i) - V_i > 0\} \quad (16)$$

where $1\{\cdot\}$ is the indicator function, $Z_i = (j_i, X_i)$, and j_i represents a full set of judge dummy variables. By assumption, u_i and ϕ_i are potentially correlated with each other but V_i is independent of j_i and X_i . The Marginal Treatment Effect is

$$MTE(X_i = x, V_i = p) \equiv E[y_{1i} - y_{0i} | X_i = x, V_i = p] \quad (17)$$

where $P(Z_i) \equiv \Pr(A_i = 1 | Z_i)$. Given equation (14), $MTE(X_i = x, V_i = p) = \phi + u_{1i} - u_{0i} = \phi_i$. Using equation (15), we estimate the conditional expectation function

$$\begin{aligned} E[y_i | X_i = x, P(Z_i) = p] &= E[A_i \phi_i + X_i \delta_A + u_i | X_i = x, P(Z_i) = p] \\ &= E[A_i(\phi + u_{1i} - u_i) | X_i = x, P(Z_i) = p] + X_i \delta_A + E[u_i | X_i = x, P(Z_i) = p] \\ &= E[A_i \phi | X_i = x, P(Z_i) = p] + E[(u_{1i} - u_i) | A_i = 1, X_i = x, P(Z_i) = p]p + X_i \delta_A \\ &\quad + E[u_i | X_i = x, P(Z_i) = p] \end{aligned} \quad (18)$$

where the step $E[A_i(u_{1i} - u_i) | X_i = x, P(Z_i) = p] = E[(u_{1i} - u_i) | A_i = 1, X_i = x, P(Z_i) = p] \Pr[A_i = 1 | X_i = x, P(Z_i) = p]$ follows from the Law of Total Probability, and noting that $\Pr[A_i = 1 | X_i = x, P(Z_i) = p] = p$. Continuing with the simplifications, and noting that we have already assumed that u_{1i}, u_i are independent of X_i we have:

$$\begin{aligned} E[y_i | X_i = x, P(Z_i) = p] &= \phi p + E[(u_{1i} - u_i) | A_i = 1, P(Z_i) = p] + X_i \delta_A + E[u_i | P(Z_i) = p] \\ &= X_i \delta_A + \phi p + E[(u_{1i} - u_i) | A_i = 1, P(Z_i) = p]p + E[u_i | P(Z_i) = p] \\ &= X_i \delta_A + K(p) \end{aligned} \quad (19)$$

where $K(p) \equiv \phi p + E[(u_{1i} - u_i) | A_i = 1, P(Z_i) = p]p + E[u_i | P(Z_i) = p]$. Differentiating equation (19) with respect to p yields

$$\frac{\partial E[y_i | X_i = x, P(Z_i) = p]}{\partial p} = K'(p) \quad (20)$$

This derivative is equal to the Marginal Treatment Effect. To see this, note that as a normalization we can let the distribution of V_i be uniform $[0, 1]$, so

$$\begin{aligned} \frac{\partial E[y_i|X_i = x, P(Z_i) = p]}{\partial p} &= \frac{\partial \left[\int_0^p E[y_{1i}|X_i = x, V_i = p] + \int_p^1 E[y_{0i}|X_i = x, V_i = p] \right]}{\partial p} \\ &= E[y_{1i}|X_i = x, V_i = p] - E[y_{0i}|X_i = x, V_i = p] \\ &\equiv MTE(X_i = x, V_i = p). \end{aligned} \tag{21}$$

Thus estimation of equation (19) and taking $K'(p)$ yields the MTE.

Demeaning the data

We have over 500,000 hearing office-day interactions as covariates, so directly estimating equations (5) and (6) is not computationally feasible. To simplify the problem we de-mean the data. Specifically, we take the difference between $f(j_i \hat{\gamma}_{1,-i})$, A_i , $K(P(\hat{Z}_i))$, and y_i and the means of the same variables heard at the same hearing office and same day.¹¹ We then estimate:

$$\tilde{A}_i = \widetilde{f(j_i \hat{\gamma}_{1,-i})} + \eta_i^*, \tag{22}$$

$$\tilde{y}_i = \widetilde{K(P(\hat{Z}_i))} + \mu_i^* \tag{23}$$

where “ $\widetilde{\cdot}$ ” represents a de-meanned variable, e.g., $\tilde{A}_i = A_i - \bar{A}_t$ and \bar{A}_t is the mean allowance rate at the hearing office and on the day that case i was assigned and $\tilde{j}_i = j_i - \bar{j}_t$ and \bar{j}_t is the mean value of j at the hearing office and on the day that case i was assigned. For the functions $f(\cdot)$ and $K(\cdot)$ we choose polynomials, so $f(\hat{j}_i) = \sum_{k=1}^K \theta_k \hat{j}_i^k$ and $K(\hat{A}_i) = \sum_{k=1}^K \theta_k \hat{A}_i^k$. Polynomials are straightforward to demean, so $\widetilde{f(\hat{j}_i)} = \sum_{k=1}^K \phi_k \hat{j}_i^k$, where $\hat{j}_i^k = j_i^k - \overline{j_t^k}$ (where $\overline{j_t^k}$ is demeaned value of the k^{th} power of the judge-specific allowance rate of all judges at the office where case i was heard) and $\widetilde{K(\hat{A}_i)} = \sum_{k=1}^K \theta_k \widetilde{\hat{A}_i^k}$, where $\widetilde{\hat{A}_i^k} = \hat{A}_i^k - \overline{\hat{A}_i^k}$. We choose the order of polynomial K that minimizes Akaike’s information criterion, $\ln \hat{\sigma}^2 + 2K/N$ and the Bayesian information criterion, $\ln(\hat{\sigma}^2) + K/N \cdot \ln(N)$. Because of the well known endpoint problems with polynomials, we experimented with the order of the polynomial. We

¹¹This is equivalent to taking residuals from first stage regressions of $f(j_i \hat{\gamma}_{1,-i})$, A_i , $K(P(\hat{Z}_i))$, and y_i on X_i .

found that the results were largely unchanged when we increased or decreased the order of the polynomial by 1.

The instrument is $j_i \hat{\gamma}_1$ from the equation

$$A_i = j_i \hat{\gamma}_1 + X_i \gamma_2 + e_i \quad (24)$$

implies

$$E[A_s | X_s] = E[j_s \hat{\gamma}_1 | X_s] + X_s \gamma_2 \quad (25)$$

for any given s and so

$$E[j_s \hat{\gamma}_1 - E[j_s \hat{\gamma}_1 | X_s]] = E[A_s - E[A_s | X_s]] \quad (26)$$

where the left-hand side object is $E[j_s \hat{\gamma}_1 - E[j_s \hat{\gamma}_1 | X_s]]$, the de-measured instrumental variable. We approximate the right-hand side object, but using the sample analog and leaving observation i out, as in a jackknife estimator, so the constructed instrument is:

$$\widetilde{j_i \hat{\gamma}_{1,-i}} = \frac{1}{N_j - 1} \sum_{s \in \{J\}, s \neq i} A_s - \overline{A_s} \quad (27)$$

where N_j is the number of cases heard by judge j_i over the sample period, $\{J\}$ is the set of cases heard by judge j_i , $\overline{A_s}$ is the mean allowance rate at case s 's hearing office on the day case s was heard. Doyle (2008) uses a similar approach. Because we remove case i from $\widetilde{j_i \hat{\gamma}_{1,-i}}$, as in a jackknife estimator, it should be independent of η_i and μ_i , even in a small sample.

Based on Monte Carlo experiments with what seemed reasonable parameters, the procedure produced accurate approximations in the linear models, as well as for the true MTE from the 10th to 90th percentiles of the distribution of V_i , so we present estimates of the MTE over the middle 80 percent of the data.

Working Paper Series

A series of research studies on regional economic issues relating to the Seventh Federal Reserve District, and on financial and economic topics.

U.S. Corporate and Bank Insolvency Regimes: An Economic Comparison and Evaluation <i>Robert R. Bliss and George G. Kaufman</i>	WP-06-01
Redistribution, Taxes, and the Median Voter <i>Marco Bassetto and Jess Benhabib</i>	WP-06-02
Identification of Search Models with Initial Condition Problems <i>Gadi Barlevy and H. N. Nagaraja</i>	WP-06-03
Tax Riots <i>Marco Bassetto and Christopher Phelan</i>	WP-06-04
The Tradeoff between Mortgage Prepayments and Tax-Deferred Retirement Savings <i>Gene Amromin, Jennifer Huang, and Clemens Sialm</i>	WP-06-05
Why are safeguards needed in a trade agreement? <i>Meredith A. Crowley</i>	WP-06-06
Taxation, Entrepreneurship, and Wealth <i>Marco Cagetti and Mariacristina De Nardi</i>	WP-06-07
A New Social Compact: How University Engagement Can Fuel Innovation <i>Laura Melle, Larry Isaak, and Richard Mattoon</i>	WP-06-08
Mergers and Risk <i>Craig H. Furfine and Richard J. Rosen</i>	WP-06-09
Two Flaws in Business Cycle Accounting <i>Lawrence J. Christiano and Joshua M. Davis</i>	WP-06-10
Do Consumers Choose the Right Credit Contracts? <i>Sumit Agarwal, Souphala Chomsisengphet, Chunlin Liu, and Nicholas S. Souleles</i>	WP-06-11
Chronicles of a Deflation Unforetold <i>François R. Velde</i>	WP-06-12
Female Offenders Use of Social Welfare Programs Before and After Jail and Prison: Does Prison Cause Welfare Dependency? <i>Kristin F. Butcher and Robert J. LaLonde</i>	WP-06-13
Eat or Be Eaten: A Theory of Mergers and Firm Size <i>Gary Gorton, Matthias Kahl, and Richard Rosen</i>	WP-06-14

Working Paper Series *(continued)*

Do Bonds Span Volatility Risk in the U.S. Treasury Market? A Specification Test for Affine Term Structure Models <i>Torben G. Andersen and Luca Benzoni</i>	WP-06-15
Transforming Payment Choices by Doubling Fees on the Illinois Tollway <i>Gene Amromin, Carrie Jankowski, and Richard D. Porter</i>	WP-06-16
How Did the 2003 Dividend Tax Cut Affect Stock Prices? <i>Gene Amromin, Paul Harrison, and Steven Sharpe</i>	WP-06-17
Will Writing and Bequest Motives: Early 20th Century Irish Evidence <i>Leslie McGranahan</i>	WP-06-18
How Professional Forecasters View Shocks to GDP <i>Spencer D. Krane</i>	WP-06-19
Evolving Agglomeration in the U.S. auto supplier industry <i>Thomas Klier and Daniel P. McMillen</i>	WP-06-20
Mortality, Mass-Layoffs, and Career Outcomes: An Analysis using Administrative Data <i>Daniel Sullivan and Till von Wachter</i>	WP-06-21
The Agreement on Subsidies and Countervailing Measures: Tying One's Hand through the WTO. <i>Meredith A. Crowley</i>	WP-06-22
How Did Schooling Laws Improve Long-Term Health and Lower Mortality? <i>Bhashkar Mazumder</i>	WP-06-23
Manufacturing Plants' Use of Temporary Workers: An Analysis Using Census Micro Data <i>Yukako Ono and Daniel Sullivan</i>	WP-06-24
What Can We Learn about Financial Access from U.S. Immigrants? <i>Una Okonkwo Osili and Anna Paulson</i>	WP-06-25
Bank Imputed Interest Rates: Unbiased Estimates of Offered Rates? <i>Evren Ors and Tara Rice</i>	WP-06-26
Welfare Implications of the Transition to High Household Debt <i>Jeffrey R. Campbell and Zvi Hercowitz</i>	WP-06-27
Last-In First-Out Oligopoly Dynamics <i>Jaap H. Abbring and Jeffrey R. Campbell</i>	WP-06-28
Oligopoly Dynamics with Barriers to Entry <i>Jaap H. Abbring and Jeffrey R. Campbell</i>	WP-06-29
Risk Taking and the Quality of Informal Insurance: Gambling and Remittances in Thailand <i>Douglas L. Miller and Anna L. Paulson</i>	WP-07-01

Working Paper Series *(continued)*

Fast Micro and Slow Macro: Can Aggregation Explain the Persistence of Inflation? <i>Filippo Altissimo, Benoît Mojon, and Paolo Zaffaroni</i>	WP-07-02
Assessing a Decade of Interstate Bank Branching <i>Christian Johnson and Tara Rice</i>	WP-07-03
Debit Card and Cash Usage: A Cross-Country Analysis <i>Gene Amromin and Sujit Chakravorti</i>	WP-07-04
The Age of Reason: Financial Decisions Over the Lifecycle <i>Sumit Agarwal, John C. Driscoll, Xavier Gabaix, and David Laibson</i>	WP-07-05
Information Acquisition in Financial Markets: a Correction <i>Gadi Barlevy and Pietro Veronesi</i>	WP-07-06
Monetary Policy, Output Composition and the Great Moderation <i>Benoît Mojon</i>	WP-07-07
Estate Taxation, Entrepreneurship, and Wealth <i>Marco Cagetti and Mariacristina De Nardi</i>	WP-07-08
Conflict of Interest and Certification in the U.S. IPO Market <i>Luca Benzoni and Carola Schenone</i>	WP-07-09
The Reaction of Consumer Spending and Debt to Tax Rebates – Evidence from Consumer Credit Data <i>Sumit Agarwal, Chunlin Liu, and Nicholas S. Souleles</i>	WP-07-10
Portfolio Choice over the Life-Cycle when the Stock and Labor Markets are Cointegrated <i>Luca Benzoni, Pierre Collin-Dufresne, and Robert S. Goldstein</i>	WP-07-11
Nonparametric Analysis of Intergenerational Income Mobility with Application to the United States <i>Debopam Bhattacharya and Bhashkar Mazumder</i>	WP-07-12
How the Credit Channel Works: Differentiating the Bank Lending Channel and the Balance Sheet Channel <i>Lamont K. Black and Richard J. Rosen</i>	WP-07-13
Labor Market Transitions and Self-Employment <i>Ellen R. Rissman</i>	WP-07-14
First-Time Home Buyers and Residential Investment Volatility <i>Jonas D.M. Fisher and Martin Gervais</i>	WP-07-15
Establishments Dynamics and Matching Frictions in Classical Competitive Equilibrium <i>Marcelo Veracierto</i>	WP-07-16
Technology's Edge: The Educational Benefits of Computer-Aided Instruction <i>Lisa Barrow, Lisa Markman, and Cecilia Elena Rouse</i>	WP-07-17

Working Paper Series *(continued)*

The Widow's Offering: Inheritance, Family Structure, and the Charitable Gifts of Women <i>Leslie McGranahan</i>	WP-07-18
Demand Volatility and the Lag between the Growth of Temporary and Permanent Employment <i>Sainan Jin, Yukako Ono, and Qinghua Zhang</i>	WP-07-19
A Conversation with 590 Nascent Entrepreneurs <i>Jeffrey R. Campbell and Mariacristina De Nardi</i>	WP-07-20
Cyclical Dumping and US Antidumping Protection: 1980-2001 <i>Meredith A. Crowley</i>	WP-07-21
Health Capital and the Prenatal Environment: The Effect of Maternal Fasting During Pregnancy <i>Douglas Almond and Bhashkar Mazumder</i>	WP-07-22
The Spending and Debt Response to Minimum Wage Hikes <i>Daniel Aaronson, Sumit Agarwal, and Eric French</i>	WP-07-23
The Impact of Mexican Immigrants on U.S. Wage Structure <i>Maude Toussaint-Comeau</i>	WP-07-24
A Leverage-based Model of Speculative Bubbles <i>Gadi Barlevy</i>	WP-08-01
Displacement, Asymmetric Information and Heterogeneous Human Capital <i>Luojia Hu and Christopher Taber</i>	WP-08-02
BankCaR (Bank Capital-at-Risk): A credit risk model for US commercial bank charge-offs <i>Jon Frye and Eduard Pelz</i>	WP-08-03
Bank Lending, Financing Constraints and SME Investment <i>Santiago Carbó-Valverde, Francisco Rodríguez-Fernández, and Gregory F. Udell</i>	WP-08-04
Global Inflation <i>Matteo Ciccarelli and Benoît Mojon</i>	WP-08-05
Scale and the Origins of Structural Change <i>Francisco J. Buera and Joseph P. Kaboski</i>	WP-08-06
Inventories, Lumpy Trade, and Large Devaluations <i>George Alessandria, Joseph P. Kaboski, and Virgiliu Midrigan</i>	WP-08-07
School Vouchers and Student Achievement: Recent Evidence, Remaining Questions <i>Cecilia Elena Rouse and Lisa Barrow</i>	WP-08-08

Working Paper Series *(continued)*

Does It Pay to Read Your Junk Mail? Evidence of the Effect of Advertising on Home Equity Credit Choices <i>Sumit Agarwal and Brent W. Ambrose</i>	WP-08-09
The Choice between Arm's-Length and Relationship Debt: Evidence from eLoans <i>Sumit Agarwal and Robert Hauswald</i>	WP-08-10
Consumer Choice and Merchant Acceptance of Payment Media <i>Wilko Bolt and Sujit Chakravorti</i>	WP-08-11
Investment Shocks and Business Cycles <i>Alejandro Justiniano, Giorgio E. Primiceri, and Andrea Tambalotti</i>	WP-08-12
New Vehicle Characteristics and the Cost of the Corporate Average Fuel Economy Standard <i>Thomas Klier and Joshua Linn</i>	WP-08-13
Realized Volatility <i>Torben G. Andersen and Luca Benzoni</i>	WP-08-14
Revenue Bubbles and Structural Deficits: What's a state to do? <i>Richard Mattoon and Leslie McGranahan</i>	WP-08-15
The role of lenders in the home price boom <i>Richard J. Rosen</i>	WP-08-16
Bank Crises and Investor Confidence <i>Una Okonkwo Osili and Anna Paulson</i>	WP-08-17
Life Expectancy and Old Age Savings <i>Mariacristina De Nardi, Eric French, and John Bailey Jones</i>	WP-08-18
Remittance Behavior among New U.S. Immigrants <i>Katherine Meckel</i>	WP-08-19
Birth Cohort and the Black-White Achievement Gap: The Roles of Access and Health Soon After Birth <i>Kenneth Y. Chay, Jonathan Guryan, and Bhashkar Mazumder</i>	WP-08-20
Public Investment and Budget Rules for State vs. Local Governments <i>Marco Bassetto</i>	WP-08-21
Why Has Home Ownership Fallen Among the Young? <i>Jonas D.M. Fisher and Martin Gervais</i>	WP-09-01
Why do the Elderly Save? The Role of Medical Expenses <i>Mariacristina De Nardi, Eric French, and John Bailey Jones</i>	WP-09-02
Using Stock Returns to Identify Government Spending Shocks <i>Jonas D.M. Fisher and Ryan Peters</i>	WP-09-03

Working Paper Series *(continued)*

Stochastic Volatility

Torben G. Andersen and Luca Benzoni

WP-09-04

The Effect of Disability Insurance Receipt on Labor Supply

Eric French and Jae Song

WP-09-05