



The Many Faces of Know Your Farmer Know Your Food

Sponsors and Contributors



Committed to the future of rural communities.



Fresh Taste

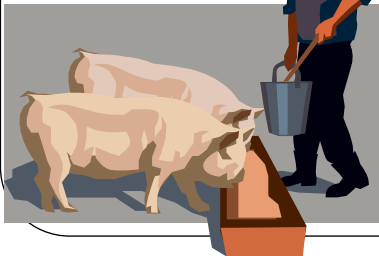
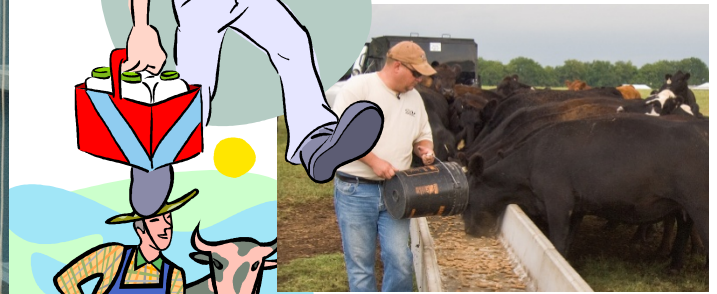
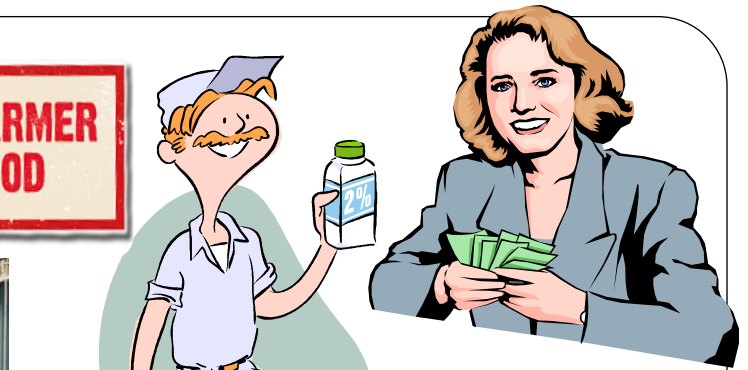


FEDERAL RESERVE BANK *of* CHICAGO

THE MANY FACES



**KNOW YOUR FARMER
KNOW YOUR FOOD**



Rural Development



United States Department of Agriculture
Rural Development
Committed to the future of rural communities



Value Added Producer Grant



Committed to the future of rural communities.

Committed to the future of rural communities.

Kilgus
Farmstead

*Ropp
Jersey Cheese,
Normal, IL*



Value Added Producer Grant

Business Programs

*Mt. Carroll Community
Development Corporation*



Rural Business Enterprise Grant

Business Programs



City of Freeport



**KNOW YOUR FARMER
KNOW YOUR FOOD**

Rural Business Opportunity Grant

Business Programs



WATERSHED

ENDLESS POSSIBILITIES...
If you can imagine it, we'll do the rest

- WHO WE ARE
- CAPABILITIES
- PREMIUM INGREDIENTS
- PARTNERING FOR SUCCESS
- R&D SERVICES
- REQUEST A SAMPLE
- CONTACT US

LEVERAGING FREEZE DRY TECHNOLOGY

Watershed Foods



Business & Industry Guaranteed Loan

Business Programs



*Thrushwood Farms
Quality Meats*



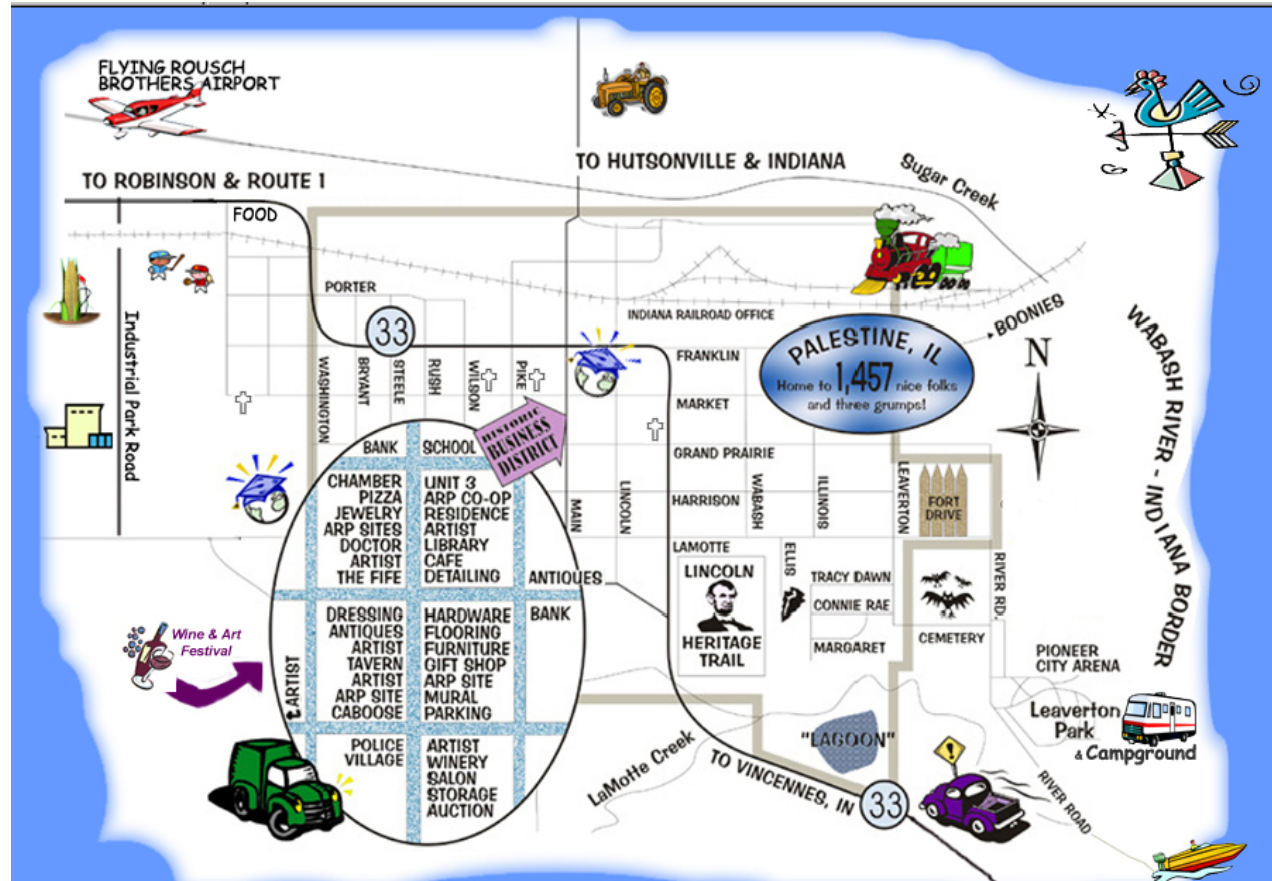
*Business & Industry
Guaranteed Loan*

Community Programs

City of
Palestine



**KNOW YOUR FARMER
KNOW YOUR FOOD**



Direct Community Facility Loans

Rural Energy for America Program

“When we decided to address our energy costs during the expansion of Mahomet IGA, we looked into a state of the art, "first of its kind" system to heat and cool our compressor system, our store and our water with ground water.

The USDA was great in assisting us in understanding the grant process at every step. With the cost of the system, the USDA grant was the deciding factor in investing in this project.”

*Brooks Marsh, President / CEO
Village Market IGA Inc.,
Mahomet, IL*





FNS Supports Local Foods

USDA Food and Nutrition Service
February 2012





Mission

- The Food and Nutrition Service (FNS) increases food security and reduces hunger in partnership with cooperating organizations by providing children and needy families access to food, a healthful diet, and nutrition education in a manner that supports American agriculture and inspires public confidence.
- FNS serves 1 in 4 Americans each year



WIC & Seniors Farmers Market Program

- Serves low-income mothers, young children and seniors.
- Uses coupons at farmers' markets, roadside stands, and community programs that grow fruits and vegetables.





SNAP & Farmers Markets





SNAP & Farmers Markets

	2010 Number of Markets/ DMF	2011 Number of Markets/ DMF	2010 SNAP Redemptions	2011 SNAP Redemptions	2010/2011 Redemptions Increase %
Illinois	35	48	\$41,146	\$69,320	68.47%
Indiana	13	21	\$8,338	\$20,527	146.19%
Michigan	82	151	\$578,518	\$1,076,611	86.10%
Minnesota	27	44	\$20,007	\$66,852	234.14%
Ohio	55	83	\$81,086	\$161,040	98.60%
Wisconsin	25	46	\$48,962	\$77,042	57.35%
Totals	237	393	\$778,057	\$1,471,392	89.11%



**KNOW YOUR FARMER
KNOW YOUR FOOD**

Farm to School

Connects K-12
schools with
regional or
Local farms






USDA Foods




USDA Foods are Healthier

- More whole grains
- Less sugar
- Less sodium
- Less fat

Natural Resources Conservation Service

 United States Department of Agriculture
Natural Resources Conservation Service

 NRCS Helping People Help the Land



NRCS

“Core 6” practices for Organic growers

- 1. Conservation Crop Rotation**
- 2. Cover Crop**
- 3. Nutrient Management**
- 4. Pest Management**
- 5. Prescribed Grazing**
- 6. Forage Harvest management**

EQIP is a “fix it” program; EQIP helps landowners solve existing resource problems



NRCS' EQIP Offers...

- Financial & technical help
- A way to voluntarily address soil, water & related natural resource concerns on private lands
- Structural solutions, management techniques & conservation practices



Farm Service Agency



FARM SERVICE AGENCY COMMUNITY GARDENS IN ILLINOIS



TAZEWELL COUNTY COMMUNITY GARDEN PRODUCE FROM ONE PICKING



FAYETTE COUNTY COMMUNITY GARDEN VANDALIA, ILLINOIS



PRODUCE IS DONATED TO THE CEFS FOOD PANTRY, FAYETTE COUNTY SENIOR CENTER, AND AREA NURSING HOMES

Cucumbers – 224 lbs.	kohlrabi – 21 lbs.	squash – 47 lbs.
Zucchini – 35 lbs.	green peppers – 24 lbs.	jalapenos – 38 lbs.
Eggplant – 48 lbs.	tomatoes – 66 lbs.	okra – 3 lbs.
Kale – 5 lbs.	garlic – 3 lbs.	raspberries – 21 lbs.
Gooseberries – 3 lbs.		

MACOUPIN COUNTY COMMUNITY GARDEN CARLINVILLE, ILLINOIS



MANY ROWS OF VEGETABLES GROWING
ALL PRODUCE WAS DONATED TO THE
CARLINVILLE FOOD PANTRY



MONROE COUNTY COMMUNITY GARDEN WATERLOO, ILLINOIS



MONROE COUNTY COMMUNITY GARDEN

The Community Garden was established several years back to provide food for those in need. Some of the produce includes tomatoes, onions, lettuce, pickles, green peppers, squash, and sweet corn. Assisting with this project has been the 4-H, Master Gardeners, and Junior Master Gardeners. Each year we have delivered the produce to Western Egyptian Senior Citizen center to be distributed or prepared for those in need. Preparation is underway for the 2012 Community Garden.

MASON COUNTY POTATOE GLEANNING PROJECT

Potatoes were given to the County FSA Office from a Mason County Producer.

They donated 2770 pounds to Central Illinois Food Bank and 1100 pounds to several different local food pantries and churches in Mason County.

POTATOES, POTATOES, POTATOES



COUNTY OFFICE PROGRAM TECHNICIANS HAVE POTATOES BOXED AND READY FOR DELIVERY TO FOOD BANK



BOND COUNTY COMMUNITY GARDEN GREENVILLE, ILLINOIS



DONATED TO THE BOND COUNTY SENIOR CENTER FOOD PANTRY

green beans, cucumbers, tomatoes,
watermelons, cantaloupe, cilantro, oregano,
basil, chives.

11 pounds of cucumbers and 7 pounds of
tomatoes.

MADISON COUNTY COMMUNITY GARDEN EDWARDSVILLE, ILLINOIS



ILLINOIS FSA LAND OF LINCOLN & PARTNERS COMMUNITY GARDEN



**2010 ILLINOIS COMMUNITY GARDEN PRODUCED
3,030 LBS OF PRODUCE AND IN 2011 WE EXCEEDED
OUR GOAL WITH 4,096 LBS**



FSA EMPLOYEES HARVESTING VEGETABLES



ZUCCHINI FROM ONE PICKING



OTHER GARDEN PRODUCE – ONE PICKING



SWEET CORN HARVEST – ONE PICKING



ATHENS FFA CHAPTER HELPING WEED AND PICK PEPPERS



CENTRAL ILLINOIS FOOD BANK RECEIVING FIRST PEPPERS FROM THE COMMUNITY GARDEN



ATHENS FFA CHAPTER AND THE ADVISOR – GARDEN PARTNER



THE MANY FACES



**KNOW YOUR FARMER
KNOW YOUR FOOD**

