

Rural Health and the Labor Market

Scott Loveridge
Michigan State University

Acknowledgements



United States
Department of
Agriculture

National Institute
of Food and
Agriculture

Rural Health Facts

from National Rural Health Association

- ▶ 25% of people, 10% of physicians
- ▶ 40% of rural HS students use alcohol; 25% in urban areas
- ▶ Cigarette smoking among 8th graders 50% higher
- ▶ Hypertension rates 27% higher
 - Higher death rate after acute myocardial infraction

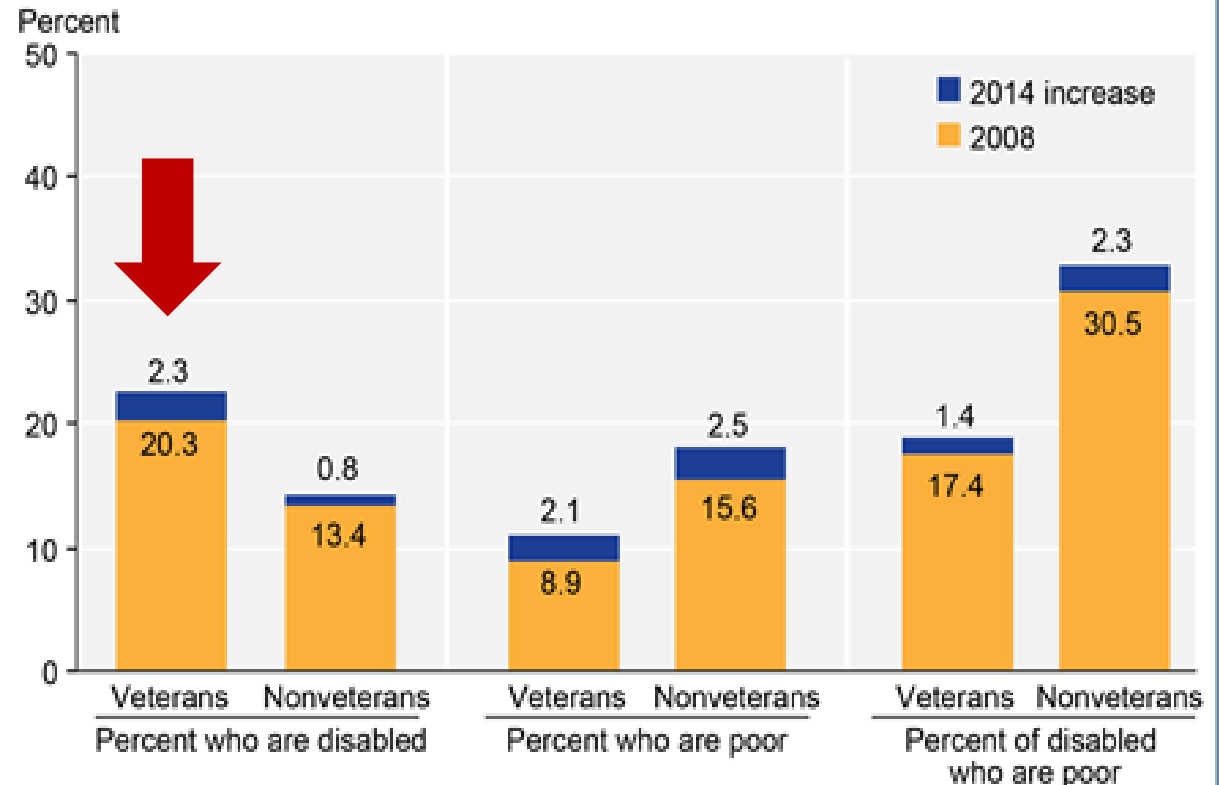
National Rural Health Association Facts Continued...

- ▶ Higher male suicide rates
- ▶ Lower Medicare payments
- ▶ 470 rural hospital closings in past 25 years
- ▶ Higher rates of “death and serious injury” accidents
 - 33% of motor vehicle accidents, 67% of deaths

Not mentioned by NRHA:

- ▶ Rural has more veterans
- ▶ Opioid use rising

Disability and poverty among rural U.S. veterans and nonveterans, 2008 and 2014



Note: Rural defined as nonmetro (not in a metropolitan statistical area). Statistics are for the working-age population 18-64.

Source: USDA, Economic Research Service using data from U.S. Census Bureau, American Community Survey 1-year estimates, 2008 and 2014.

National Center for Rural Health Works

Improving the health of rural communities



[Home](#)

[About Us](#)

[Tools & Templates](#)

[Training Workshops/Webinars](#)

[Technical Assistance](#)

[Resources](#)

Welcome to The National Center for Rural Health Works

The National Center for Rural Health Works provides tools and templates by which community residents can evaluate their health systems. This is typically accomplished by training state teams to assist rural communities. The National Center (or RHW) develops tools and templates and provides training and technical assistance in the following areas:

- [Economic Impact](#)
- [Community Health Needs Assessment](#)
- [Rural Health Needs Assessment](#)
- [Rural Health Service Profitability](#)



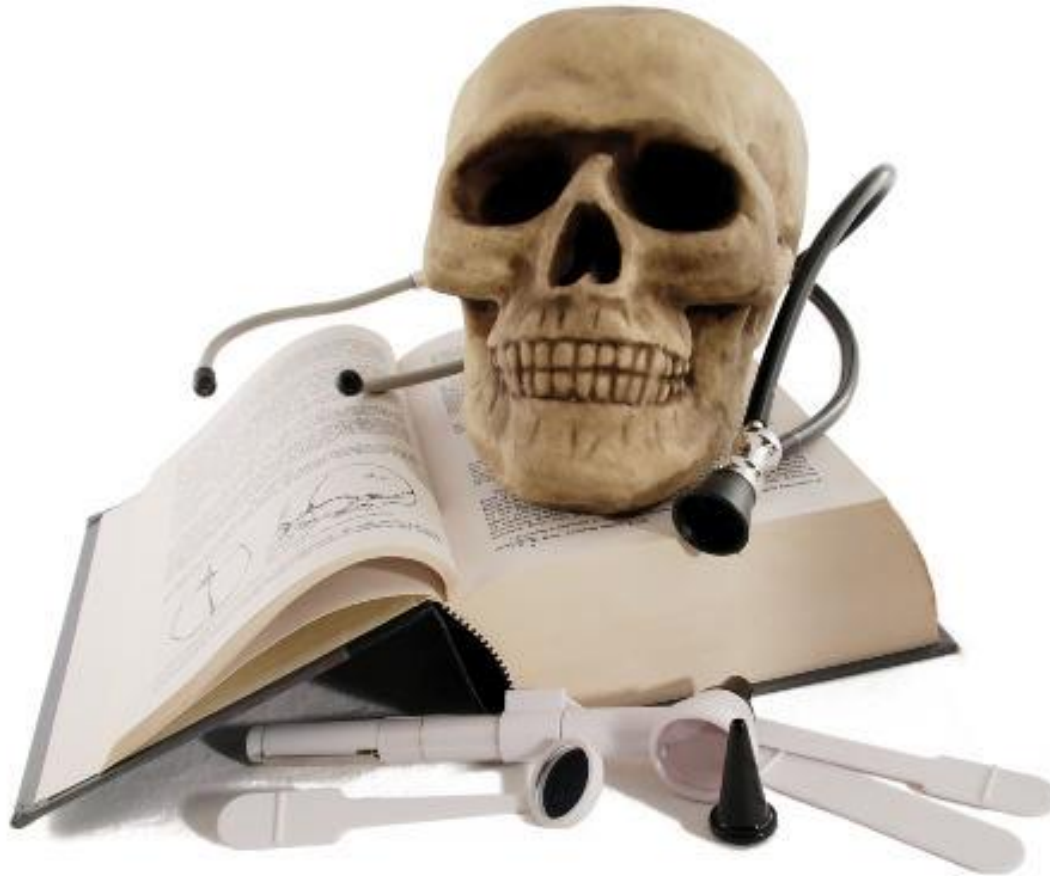
Search

"The Latest" from RHW

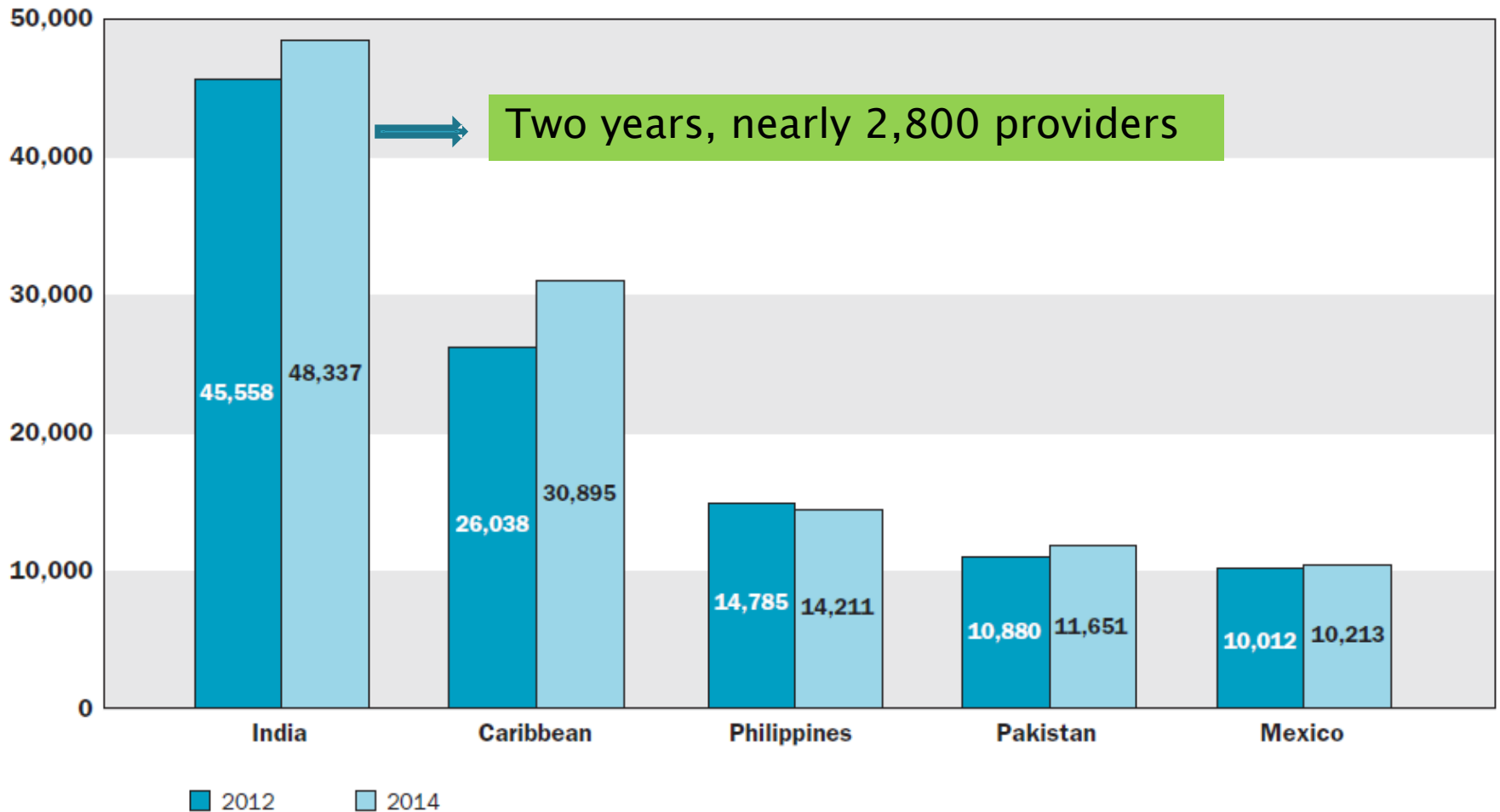
- [RHW Workshop, Thursday, December 3, 2015, hosted by New England Rural Health RoundTable in Southbridge, MA!](#)
- [RHW Webinars NOW AVAILABLE!](#)
- [Check out the LATEST Update on Economic Contributions of Rural Health Care](#)

State Resources

Provider Shortage



Locations with the Largest Number of International Medical Graduates Actively Licensed in the United States and the District of Columbia, 2012 and 2014



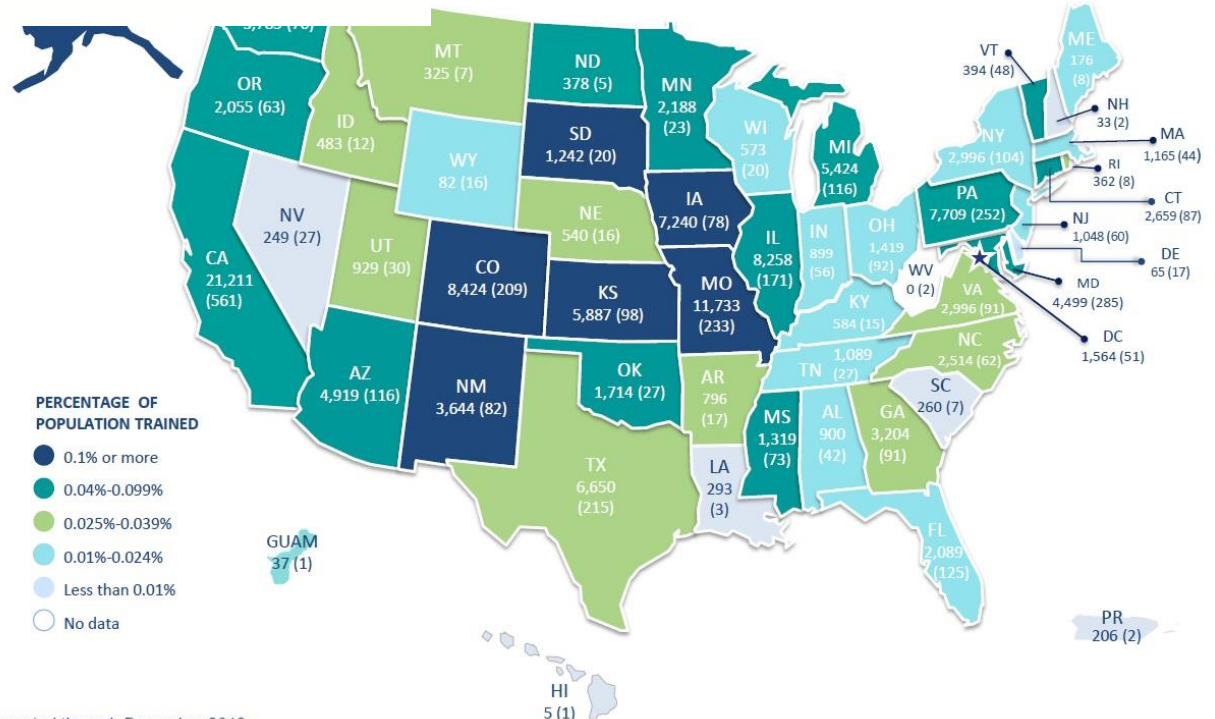
Source: 2014 FSMB Census of Licensed Physicians.

Potential Strategies



MENTAL HEALTH FIRST AID®

Over 150,000 First Aiders in the US
Trained by 4,000 Instructors



Reported through December 2013

*Strengthening the ability
of the land grant
university system to
execute its rural
development mission*



CAPE Behavioral Health Programs Database

CAPE | Community Assessment and Education to Promote
Behavioral Health Planning and Evaluation

CAPE is dedicated to identifying and sharing best practices for benchmarking community behavioral health. This CAPE database is an extensive searchable list of more than 300 behavioral health programs and interventions organized by behavioral health topic/condition and other attributes. Local leaders may consider applying or adapting these interventions to the needs of their local community. Search for programs in the CAPE database using this tool.

The Substance Abuse and Mental Health Services Administration (SAMHSA) also hosts the National Registry of Evidence-based Programs and Practices (NREPP), a database of over 300 additional interventions for substance abuse and mental health, which have been shown through research to have produced one or more positive behavioral outcomes. NREPP can be accessed online at <http://www.nrepp.samhsa.gov/>



United States
Department of
Agriculture

National Institute
of Food and
Agriculture



Keywords

Condition

Gender

Age

Race

Location

Type

Level

Setting

Search

Telemedicine?



Contact

Scott Loveridge

Michigan State University

loverid2@msu.edu